

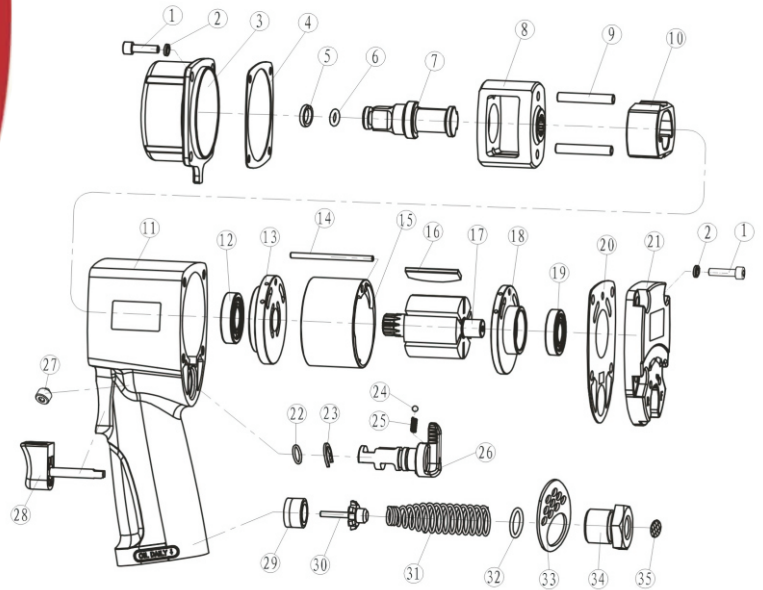
Features

- Heavy Duty Twin Hammer Mechanism Produces 400ft.-Lbs. Of Maximum Torque
- Single Hand F/r Switch Allows Fast And Easy Directional Changes
- Mini Compact Design For Work In Tight Places
- Great For Installing/tightening Or Removing/ Loosening Threaded Fasteners And For Other Workshop Applications
- Handle Exhaust

Part No.	Description	Qty.	Part No.	Description	Qty.
1	screw	8	19	bearing	1
2	spring washer	8	20	back cover gasket	1
3	hammer case	1	21	back cover	1
4	hammer case gasket	1	22	O-ring	1
5	retainer ring	1	23	knob retainer	1
6	O-ring	1	24	spring	1
7	anvil	1	25	steel ball	1
8	hammer frame	1	26	knob	1
9	hammer pin	2	27	screw	1
10	hammer	1	28	trigger	1
11	housing	1	29	throttle valve seat	1
12	front bearing	1	30	airinlet valve	1
13	front end plate	1	31	airinlet spring	1
14	cylinder pin	1	32	O-ring	1
15	cylinder	1	33	exhaust board	1
16	rotor blade	6	34	air inlet	1
17	rotor	1	35	filter	1
18	rear end plate	1			

Specifications

MODEL	:	AT-262	OVERALL LENGTH	:	115 MM
SQUARE DRIVE (INCH):	:	3/8"	AIR INLET (PT)	:	1/4"
CAPACITY BOLT SIZE	:	16 MM	AIR HOSE (ID)	:	1/2"
FREE SPEED (RPM)	:	9000	NET WEIGHT	:	1.63 KG
MAX TORQUE	:	550 NM	PACKING	:	12 PCS/CTN
AIR CONSUMPTION	:	120L/MIN	PCS/CTN/CUFT	:	395×330×245MM



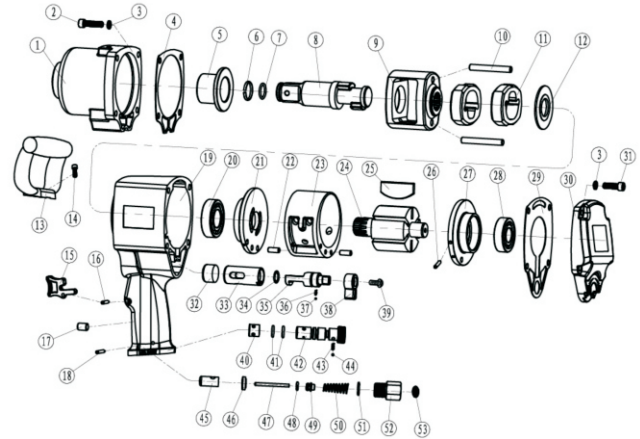
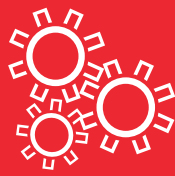
Features

- Heavy Duty Twin Hammer Mechanism Produces 400ft- Lbs. Of Maximum Torque
- Single Hand F/r Switch Allows Fast And Easy Directional Changes
- Mini Compact Design For Work In Tight Places
- Great For Installing/tightening Or Removing/loosening Threaded Fasteners And For Other Workshop Applications
- Handle Exhaust

Part No.	Description	Qty.	Part No.	Description	Qty.
1	screw	8	19	bearing	1
2	spring washer	8	20	back cover gasket	1
3	hammer case	1	21	back cover	1
4	hammer case gasket	1	22	O-ring	1
5	retainer ring	1	23	knob retainer	1
6	O-ring	1	24	spring	1
7	anvil	1	25	steel ball	1
8	hammer frame	1	26	knob	1
9	hammer pin	2	27	screw	1
10	hammer	1	28	trigger	1
11	housing	1	29	throttle valve seat	1
12	front bearing	1	30	airinlet valve	1
13	front end plate	1	31	airinlet spring	1
14	cylinder pin	1	32	O-ring	1
15	cylinder	1	33	exhaust board	1
16	rotor blade	6	34	air inlet	1
17	rotor	1	35	filter	1
18	rear end plate	1			

Specifications

MODEL	: AT-263	OVERALL LENGTH	: 115 MM
SQUARE DRIVE (INCH)	: 1/2"	AIR INLET (PT)	: 1/4"
CAPACITY BOLT SIZE	: 16 MM	AIR HOSE (ID)	: 1/2"
FREE SPEED (RPM)	: 9000	NET WEIGHT	: 1.63 KG
MAX TORQUE	: 550 NM	PACKING	: 12 PCS/CTN
AIR CONSUMPTION	: 120L/MIN	PCS/CTN/CUFT	: 395×330×245MM



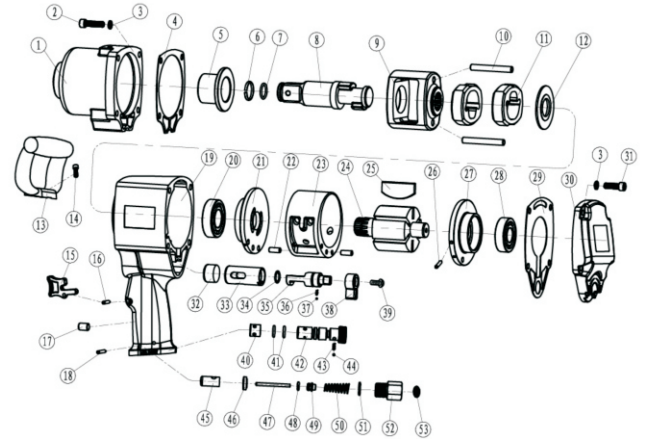
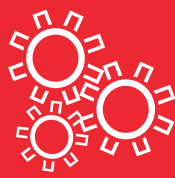
Features

- Durable Twin Hammer Impact Mechanism
- Adjustable Power Regulator
- Easy-to-service Two - Piece Construction
- Super Power And Performance Features To Tackle The Toughest Job With Ease
- Ideal For Installing/ tightening Or Removing/ loosening Threaded Fasteners And For Other Workshop Applications
- Auxiliary Handle Included
- Front Exhaust

Part No.	Description	Qty.	Part No.	Description	Qty.
1	hammer case	1	28	rear bearing	1
2	screw	4	29	rear cover gasket	1
3	spring washer	8	30	rear cover	1
4	hammer case gasket	1	31	screw	4
5	bushing	1	32	plug pin	1
6	anvil ring	1	33	reverse valve bushing	1
7	O-ring	1	34	O-ring	1
8	anvil	1	35	reverse valve	1
9	hammer frame	1	36	spring	1
10	hammer pin	2	37	steel ball	1
11	hammer	2	38	knob	1
12	hammer cage washer	1	39	screw	1
13	handle	1	40	bushing	1
14	screw	2	41	O-ring	1
15	trigger	1	42	reverse valve lever	1
16	trigger pin	1	43	valve spring	1
17	aluminium block	1	44	steel ball	1
18	limit pin	1	45	air inlet bushing	1
19	housing	1	46	throttle valve seat	1
20	front bearing	1	47	air inlet pin	1
21	front end plate	1	48	O-ring	1
22	cylinder pin	2	49	airinlet valve	1
23	cylinder	1	50	airinlet spring	1
24	rotor	1	51	O-ring	1
25	rotor blade	6	52	air inlet	1
26	end plate pin	1	53	filter	1
27	rear end plate	1			

Specifications

MODEL	: AT-265	AIR HOSE(ID)	: 3/8"
SQUARE DRIVE	: 3/4"	AVG. AIR CONSUMPTION	: 9.5 CFM
FREE SPEED	: 4200 RPM	WORKING. PRESSURE	: 6.3 BAR
MAX. TORQUE	: 1600 NM	LENGTH× HEIGHT	: 266×242 MM
AIR INLET	: 1/2"	WEIGHT	: 6.80 KG



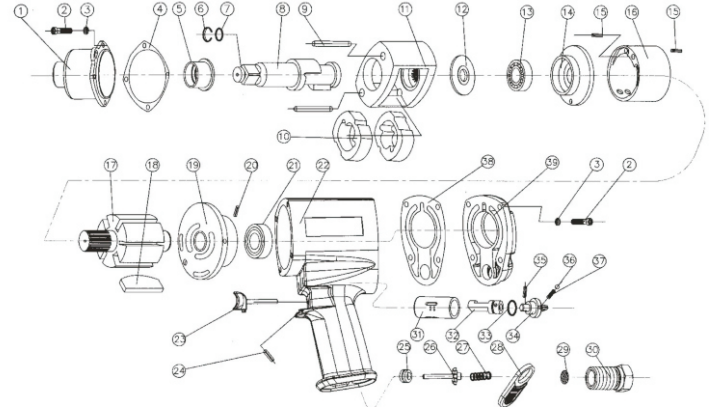
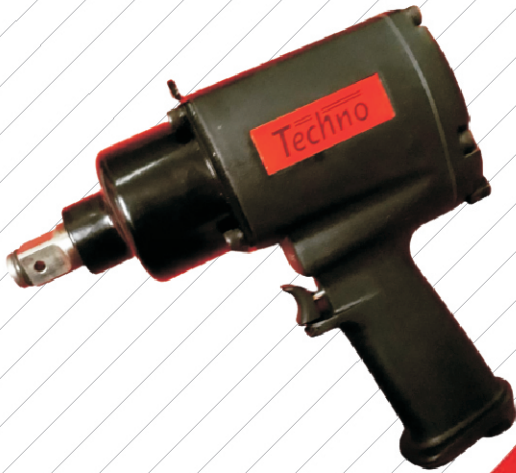
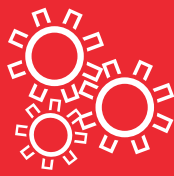
Features

- Durable Twin Hammer Impact Mechanism
- Adjustable Power Regulator
- Easy-to-service Two - Piece Construction
- Super Power And Performance Features To Tackle The Toughest Job With Ease
- Ideal For Installing/tightening Or Removing/loosening Threaded Fasteners And For Other Workshop Applications
- Auxiliary Handle Included
- Front Exhaust

Part No.	Description	Qty.	Part No.	Description	Qty.
1	hammer case	1	28	rear bearing	1
2	screw	4	29	rear cover gasket	1
3	spring washer	8	30	rear cover	1
4	hammer case gasket	1	31	screw	4
5	bushing	1	32	plug pin	1
6	anvil ring	1	33	reverse valve bushing	1
7	O-ring	1	34	O-ring	1
8	anvil	1	35	reverse valve	1
9	hammer frame	1	36	spring	1
10	hammer pin	2	37	steel ball	1
11	hammer	2	38	knob	1
12	hammer cage washer	1	39	screw	1
13	handle	1	40	bushing	1
14	screw	2	41	O-ring	1
15	trigger	1	42	reverse valve lever	1
16	trigger pin	1	43	valve spring	1
17	aluminium block	1	44	steel ball	1
18	limit pin	1	45	air inlet bushing	1
19	housing	1	46	throttle valve seat	1
20	front bearing	1	47	air inlet pin	1
21	front end plate	1	48	O-ring	1
22	cylinder pin	2	49	airinlet valve	1
23	cylinder	1	50	airinlet spring	1
24	rotor	1	51	O-ring	1
25	rotor blade	6	52	air inlet	1
26	end plate pin	1	53	filter	1
27	rear end plate	1			

Specifications

MODEL	:	AT-266	AIR HOSE(ID)	:	1/2"
SQUARE DRIVE	:	1"	AVG. AIR CONSUMPTION	:	40CFM
FREE SPEED	:	4200 RPM	WORKING. PRESSURE	:	8-10 BAR
MAX. TORQUE	:	1600 NM	LENGTH× HEIGHT	:	235×260 MM
AIR INLET	:	1/2"	WEIGHT	:	7.30 KG



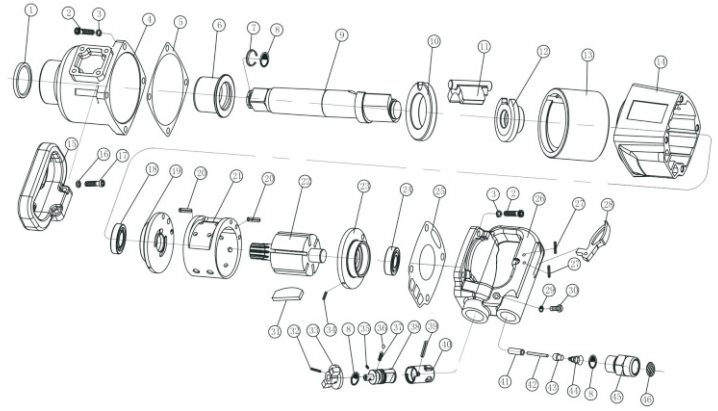
Features

- Durable Twin Hammer Impact Mechanism
- Adjustable Power Regulator
- Easy-to-service Two - Piece Construction
- Super Power And Performance Features To Tackle The Toughest Job With Ease
- Ideal For Installing/tightening Or Removing/loosening Threaded Fasteners And For Other Workshop Applications
- Auxiliary Handle Included
- Handle Exhaust

Part No.	Description	Qty.	Part No.	Description	Qty.
1	hammer case assembly	1	21	rear bearing	1
2	screw	8	22	housing	1
3	spring washer	8	23	trigger	1
4	hammer case gasket	1	24	elastic cylindrical pin	1
5	bushing	1	25	throttle valve seat	1
5	retainer ring	1	26	valve stem	1
7	o-ring	1	27	spring	1
8	anvil	1	28	exhaust board	1
9	hammer pin	1	29	filter	1
10	hammer	2	30	air inlet	1
11	hammer frame	1	31	reverse valve bushing	1
12	rear washer	1	32	reverse valve	1
13	front bearing	1	33	o-ring	1
14	front end plate	1	34	knob	1
15	elastic cylindrical pin	2	35	elastic cylindrical pin	1
16	cylinder	1	36	steel ball	1
17	rotor	1	37	spring	1
18	rotor blade	5	38	back cover gasket	1
19	rear end plate	1	39	back cover	1
20	elastic cylindrical pin	1			

Specifications

MODEL	:	AT-272	AIR HOSE(ID)	:	3/8"
SQUARE DRIVE	:	3/4"	AVG. AIR CONSUMPTION	:	9.5 CFM
FREE SPEED	:	5000 RPM	WORKING. PRESSURE	:	6.3 BAR
MAX. TORQUE	:	1300 NM	LENGTH× HEIGHT	:	242×235 MM
AIR INLET	:	3/8"	WEIGHT	:	2.60 KG



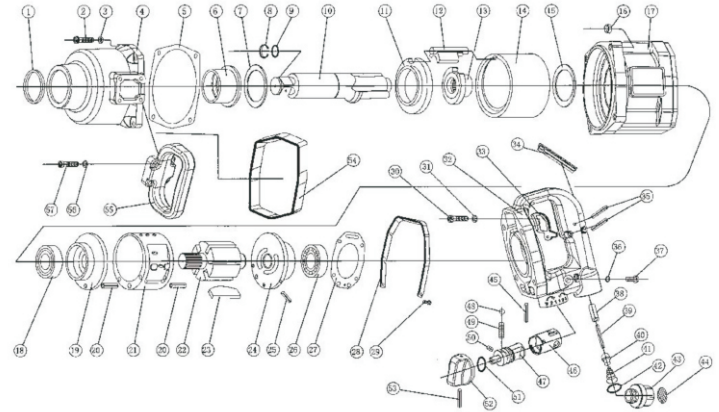
Features

- 3 - Position Power Regulator In Forward And Reverse
- Key Part/ Components Of High Precision And Heat Treatment Add Durability And Tool Life
- Removable Side Handle Provides Excellent Control
- Ideal For High Volume Repair Works On Big Trucks Tires And Heavy Equipment
- Side Exhaust

Part No.	Description	Qty.	Part No.	Description	Qty.
1	oil seal	1	24	end plate	1
2	screw	8	25	rear cover gasket	1
3	spring washer	8	26	rear cover	1
4	front motor housing	1	27	trigger pin	2
5	hammer case gasket	1	28	trigger	1
6	bushing	1	29	O-ring	1
7	anvil ring	1	30	screw	1
8	O-ring	3	31	rotor blade	6
9	anvil	1	32	knob pin	1
10	hammer pin	1	33	knob	1
11	hammer	1	34	end plate pin	1
12	hammer cage	1	35	knob limit pin	1
13	hammer frame	1	36	steel ball	1
14	housing	1	37	spring	1
15	handle	1	38	reverse knob	1
16	spring washer	4	39	reverse valve pin	1
17	screw	4	40	reverse valve bushing	1
18	front bearing	1	41	air inlet bushing	1
19	front end plate	1	42	air inlet pin	1
20	cylinder pin	2	43	air closer	1
21	cylinder	1	44	spring	1
22	rotor	1	45	air inlet	1
23	rear end plate	1	46	filter	1

Specifications

MODEL	: 9961	OVERALL LENGTH	: 540 MM
SQUARE DRIVE (INCH)	: 1"	AIR INLET (PT)	: 1/2"
CAPACITY BOLT SIZE	: 45 MM	AIR HOSE (ID)	: 1/2"
FREE SPEED (RPM)	: 4000	NET WEIGHT	: 13 KG
MAX TORQUE	: 2600 NM	PACKING	: 01 PCS/ CTN
AIR CONSUMPTION	: 250L/MIN	PCS/CTN/CUFT	: 625×235×320MM



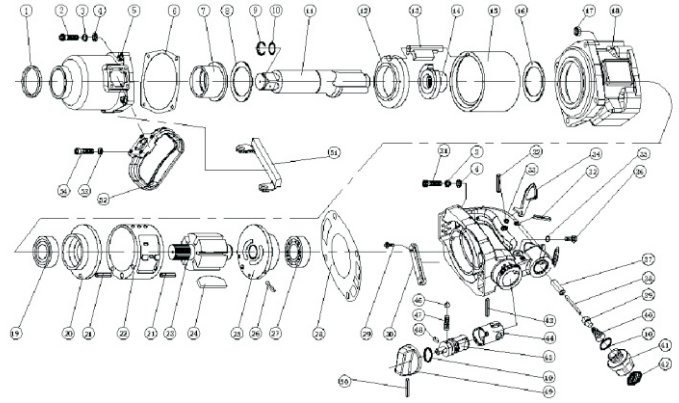
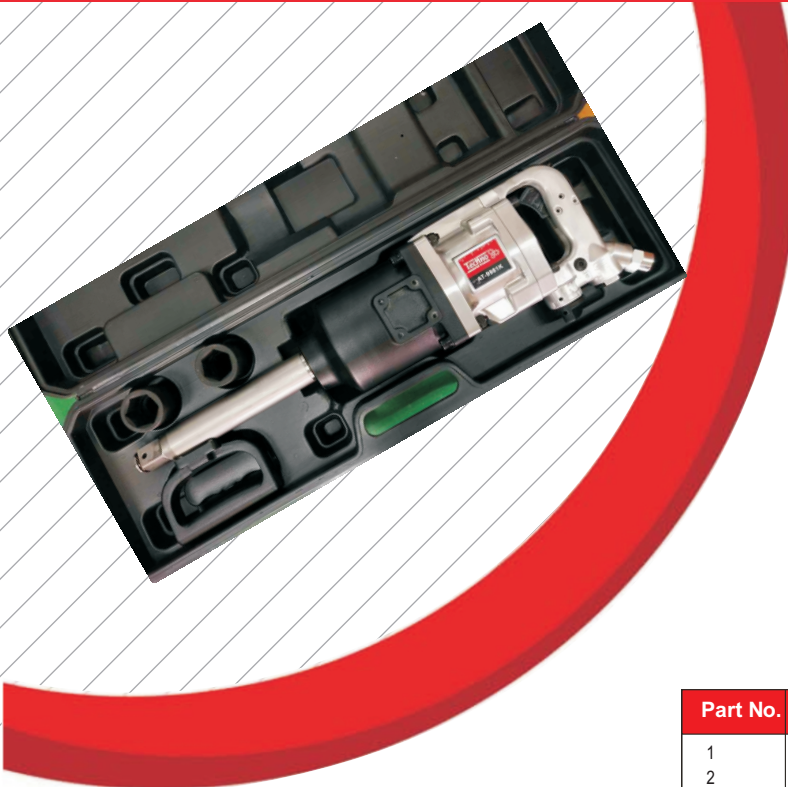
Features

- 3 - Position Power Regulator In Forward And Reverse
- Key Part/components Of High Precision And Heat Treatment Add Durability And Tool Life
- Removable Side Handle Provides Excellent Control
- Ideal For High Volume Repair Works On Big Trucks Tires And Heavy Equipment
- Side Exhaust

Part No.	Description	Qty.	Part No.	Description	Qty.
1	oil seal	1	30	screw	4
2	screw	4	31	spring washer	4
3	spring washer	4	32	rear cover	1
4	hammer case assembly	1	33	trigger	1
5	hammer case gasket	1	34	trigger protecting bai	1
5	bushing	1	35	trigger Pin	2
7	retainer washer	1	36	o-ring	1
8	retainer Ring	1	37	screw	1
9	o-ring	1	38	air inlet bushing	1
10	anvil	1	39	air inlet pin	1
11	hammer cage lining	1	40	air closer	1
12	hammer	1	41	spring	1
13	cam	1	42	o-ring	1
14	hammer frame	1	43	air inlet	1
15	rear washer	1	44	filter	1
16	screw nut	4	45	reverse valve pin	1
17	housing	1	46	reverse valve bushing	1
18	front bearing	1	47	Reverse Knob	1
19	front end plate	1	48	steel baU	1
20	cylinder pin	2	49	Spring	1
21	cylinder	1	50	knob limit pin	1
22	rotor	1	51	o-ring	1
23	rotor blade	6	52	knob	1
24	rear end plate	1	53	knob pin	1
25	end plate pin	1	54	housing ring	1
26	rear bearing	1	55	handle	4
27	rear cover gasket	1	56	spring washer	4
28	rear cover protector	1	57	screw	4
29	screw	2			

Specifications

MODEL	:	AT-9971	OVERALL LENGTH	:	540 MM
SQUARE DRIVE (INCH)	:	1"	AIR INLET (PT)	:	1/2"
CAPACITY BOLT SIZE	:	45 MM	AIR HOSE (ID)	:	1/2"
FREE SPEED (RPM)	:	4000	NET WEIGHT	:	13 KG
MAX TORQUE	:	2800 NM	PACKING	:	01 PCS/CTN
AIR CONSUMPTION	:	250L/MIN	PCS/CTN/CUFT	:	675×235×355MM



Features

- 3 - Position Power Regulator In Forward And Reverse
- Key Part/components Of High Precision And Heat Treatment Add Durability And Tool Life
- Removable Side Handle Provides Excellent Control
- Ideal For High Volume Repair Works On Big Trucks Tires And Heavy Equipment
- Side Exhaust

Part No.	Description	Qty.	Part No.	Description	Qty.
1	oil seal	1	28	rear cover gasket	1
2	screw	4	29	screw	1
3	spring washer	8	30	rear cover protector	1
4	washer	8	31	screw	4
5	front motor housing	1	32	trigger pin	2
6	hammer case gasket	1	33	rear cover	1
7	bushing	1	34	trigger	1
8	anvil washer	1	35	O-ring	1
9	anvil ring	1	36	screw	1
10	O-ring	3	37	air inlet bushing	1
11	anvil	1	38	air inlet pin	1
12	hammer pin	1	39	air closer	1
13	hammer	1	40	spring	1
14	hammer cage	1	41	air inlet	1
15	hammer frame	1	42	filter	1
16	rear washer	1	43	reverse valve pin	1
17	screw nut	4	44	reverse valve bushing	1
18	housing	1	45	reverse knob	1
19	front bearing	1	46	steel ball	1
20	front end plate	1	47	valve spring	1
21	cylinder pin	2	48	knob limit pin	1
22	cylinder	1	49	reverse valve knob	1
23	rotor	1	50	knob pin	1
24	rotor blade	6	51	housing protector	1
25	rear end plate	1	52	handle	1
26	end plate pin	1	53	spring washer	4
27	rear bearing	1	54	screw	4

Specifications

MODEL	: 9981	OVERALL LENGTH	: 615 MM
SQUARE DRIVE (INCH)	: 1"	AIR INLET (PT)	: 1/2"
CAPACITY BOLT SIZE	: 45 MM	AIR HOSE (ID)	: 1/2"
FREE SPEED (RPM)	: 3500	NET WEIGHT	: 16 KG
MAX TORQUE	: 3200 NM	PACKING	: 01 PCS/ CTN
AIR CONSUMPTION	: 380L/MIN	PCS/CTN/CUFT	: 675×235×355MM