

TECHSPECS

Product Catalogue

By  **Luthra**
PNEUMSYS

PNEUMSYS
Ø150
0A-B08D

Engineered
Toughness

Covershot Product
Groove Coupling
Size 150 mm Diameter



Luthra Pneumsys, the epitome of efficiency and adaptability serves as an exceptional solution for a multitude of applications, including compressed air, vacuum, inert gas, process water, and chemical transfers. Luthra Pneumsys aluminium pipes come with a mirror finish on the inside thus ensuring laminar flows. The exceptional finish on the inside is a protective coating to ensure no oxidation of the inside of the pipe when exposed to water, oil, or other contaminants so the

media flowing through the pipe remains integral in nature. This is in stark contrast to conventional materials such as black iron or copper, which are known to deteriorate over time due to corrosion. Luthra Pneumsys consistently deliver pristine air quality while maintaining peak flow rate performance, in perfect harmony with our commitment to energy efficiency and sustainable product design.





Table of Content

Certificates	01
Field of Application	03
Push-fit Range	04
Groove-fit Range	10
Accessories	18
Stainless steel Range	34
Pneumatic Range	57
PEX Push-in Range	64
Client List	70
Contact Us	74

Our Certifications

PRODUCT QUALITY



ISO Certification

Luthra Pneumsys Connectors manufacturing facilities are certified ISO 9001 version 2015 and operate a Quality Management System in order to ensure the level of quality and service that is expected by the customer.



Qualicoat Certification

All aluminum pipes are coated with a lacquered powder coated finish with a Qualicoat certified coating for additional environmental protection. PRESSURE VESSEL REQUIREMENTS.



ASME B31.1/B31.3 Conformity

Luthra Pneumsys meets the requirements of ASME B31.1 & B31.3 which stipulates "the minimum requirements for the design, materials, fabrication, erection, test and inspection of power and auxiliary piping systems for industrial institutional plants" as non boiler external piping."

SAFETY STANDARDS



Luthra Pneumsys meets standards for safety, quality & compliance as specified for process piping.

ENVIRONMENTAL PROTECTION



ISO 14001

MSYS is ISO 14001 certified for our Environmental Management System, which requires a plan to reduce the environmental impact on manufacturing and selling products.



REACH - RoHS

All MSYS products comply with the REACH and RoHS directives which limit the use of hazardous substances.



Recyclable

All Luthra Pneumsys products are 100% recyclable.

MEDIA QUALITY



ISO 232021 Certification ISO 8573 is the international standard for compressed air quality. Luthra Pneumsys products have been tested to meet the highest air quality standard found within ISO 8573. The air quality is dependent on the treatment performed in the compressor room. Luthra Pneumsys will not introduce additional solid particles, water, moisture, or oil into the media being conveyed.



Oil Free Certificate

Luthra Pneumsys products will not contaminate the conveyed media with grease or oil products.

LONG TERM COMMITMENT



10 Year Warranty Luthra Pneumsys warrants its products to be free of manufacturing defects in material and workmanship to be used for oil free and moisture free compressed air for 10 years from the date of installation.

Field of Application

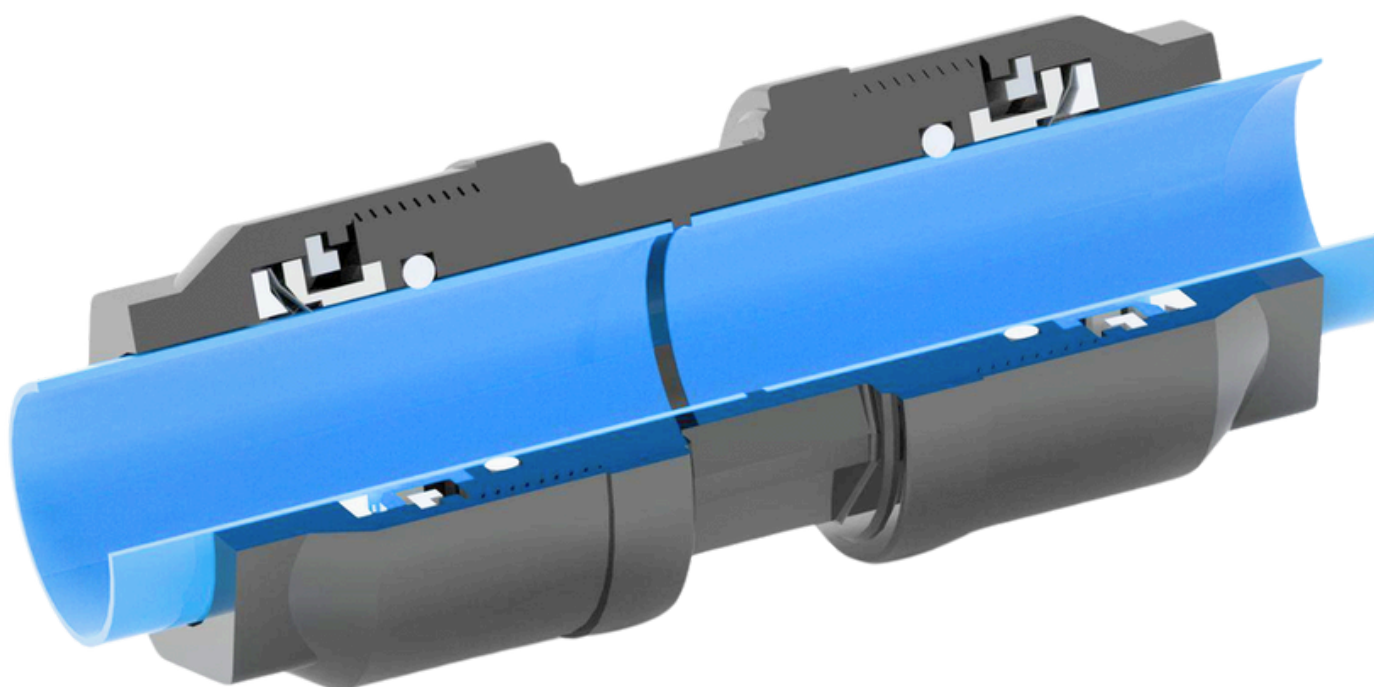
TRANSPORT AND DISTRIBUTION OF COMPRESSED AIR FOR ANY KIND OF USE.

SOME TECHNICAL CHARACTERISTICS	
Standard Colour	RAL 5012
Max Working Pressure	16 BARS
Plant Testing Pressure 1 Hour at 20°C	24 BARS
Quality Testing Pressure 1 Hour at 20°C	64 BARS
Production Tested Percentage	100%
O.ring	NBR 65/75 S.A.
Continuous Service Temp. Limit	-20C 'A 100°C
Aluminium Pipe Mechanical	According to EN-755-2/2008
Resistance	Standard
Pipe Material	Aluminium Alloy EN AW 6063- T5 According to EN-755-2/2008. (External Treatment:- Powder Coating Internal Treatment:- Chromadizing)
Internal treatment	Chromatized
Fittings Material	Aluminium
Teeth Ring Material	304 Stainless Steel
Threads Standards	ISO 7-1:1994(en)

Push-Fit Range

Luthra Pneumsys Push-In Fitting has a 100% Aluminium and an integral design which has the O ring housed secure and housed in the body of the fitting so no chance of getting dislodged during assembly / disassembly / misaligned during assembly.

Push-Fit Range



Assembly Instructions For Push-In Fitting

1.



2.



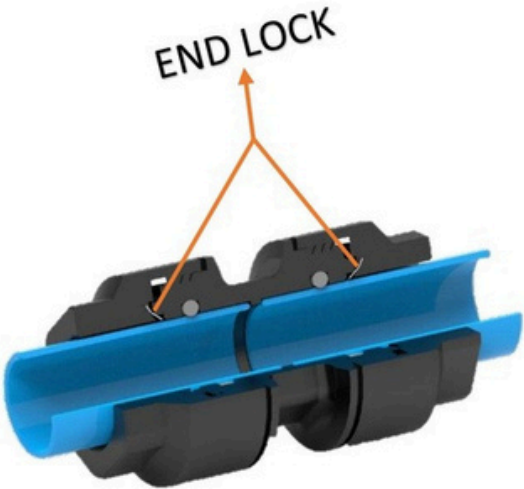
3.



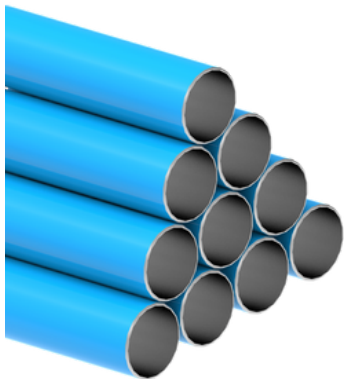
4.



5.



Push-Fit Range



ALUMINIUM PIPE

PART NO.	SIZE MM/SM (DIA OF PIPE)	LENGTH OF PIPE (METERS)
82.900.020.104	20	20
82.900.020.105	25	25
82.900.020.106	40	40
82.900.020.106	50	50
82.900.020.106	63	63



STRAIGHT CONNECTOR

PART NO.	SIZE MM/SM (DIA OF PIPE)
PN0220	20
PN0225	25
PN0240	40
PN0250	50
PN0263	63



MALE ADAPTOR

PART NO.	SIZE MM/SM (DIA OF PIPE)
PN052012	20 X 1/2"
PN052034	20 X 3/4"
PN052512	25 X 1/2"
PN052534	25 X 3/4"
PN052501	25 X 1"
PN0540114	40 X 1.1/4"
PN0540112	40 X 1.1/2"
PN0550112	50 X 1.1/2"
PN055002	50 X 2"
PN056302	63 X 2"
PN0563212	63 X 2.1/2"

Push-Fit Range



FEMALE ADAPTOR

PART NO.	SIZE MM/SM (DIA OF PIPE)
PN062012	20 X 1/2"
PN062534	25 X 3/4"
PN0640114	40 X 1.1/4"
PN0650112	50 X 1.1/2"
PN066302	63 X 2"



EQUAL ELBOW

PART NO.	SIZE MM/SM (DIA OF PIPE)
PN0320	20
PN0325	25
PN0340	40
PN0350	50
PN0363	63



MALE THREADED ELBOW

PART NO.	SIZE MM/SM (DIA OF PIPE)
PN322012	20 X 1/2"
PN322534	25 X 3/4"
PN3240112	40 X 1.1/2"
PN3250112	50 X 1.1/2"
PN326302	63 X 2"



EQUAL TEE

PART NO.	SIZE MM/SM (DIA OF PIPE)
PN0420	20
PN0425	25
PN0440	40
PN0450	50
PN0463	63

Push-Fit Range



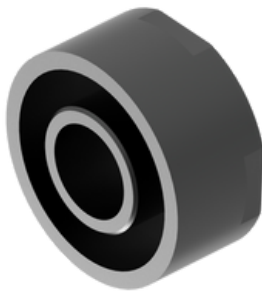
FEMALE THREADED TEE

PART NO.	SIZE MM/SM (DIA OF PIPE)
PN4120	20 X 1/2"
PN4125	25 X 3/4"
PN4140	40 X 1.1/4"
PN4150	50 X 1.1/2"
PN4163	63 X 2"



REDUCER

PART NO.	SIZE MM/SM (DIA OF PIPE)
PNRSC2520	25 X 20
PNRSC4020	40 X 20
PNRSC4025	40 X 25
PNRSC5020	50 X 20
PNRSC5025	50 X 25
PNRSC5040	50 X 40
PNRSC6325	63 X 25
PNRSC6340	63 X 40
PNRSC6350	63 X 50



END CAP

PART NO.	SIZE MM/SM (DIA OF PIPE)
PN1020	20
PN1025	25
PN1040	40
PN1050	50
PN1063	63



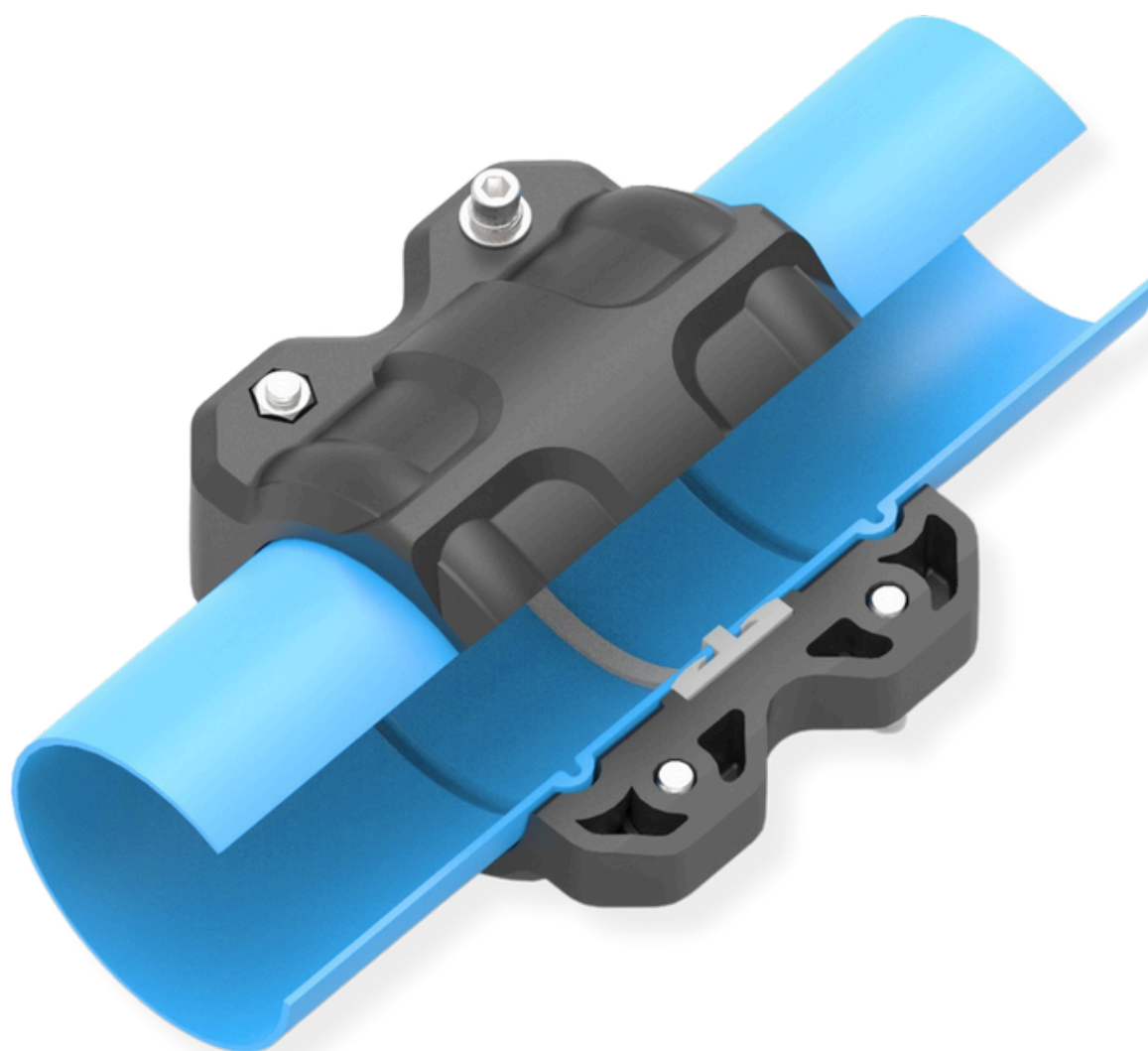
ALUMINIUM PUSHFIT & THREADED MANIFOLD BLOCK

PART NO.	SIZE MM/SM (DIA OF PIPE)
ALPNMB2012	20 X 1/2"-3 PURGE
ALPNMB2512	25 X 1/2"-3 PURGE
ALPNMB1212	1/2" X 1/2"-3 PURGE
ALPNMB3412	3/4" X 1/2"-3 PURGE
ALPNMB1112	1" X 1/2"- 3 PURGE

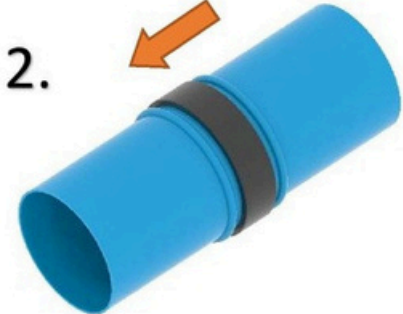
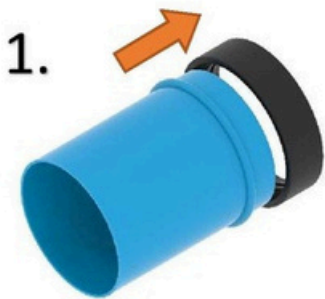
Groove-Fit Range

Luthra Pneumsys Groove coupling and Push in fittings are manufactured from 100% Aluminum and test reports can be given for the same. The couplings are having superior Cathaphoresis coating to ensure 100% resistance to any effect due to weather condition

Groove-Fit Range



Assembly Instructions For Groove Fitting



Groove Fitting Connection With Groove Connector



Male Adaptor +
1 Groove Coupling



End Plug +
1 Groove Coupling



Female Adaptor +
1 Groove Coupling



Elbow +
2 Groove Coupling



Tee +
3 Groove Coupling



Flange Adaptor +
1 Groove Coupling



Reducer +
2 Groove Coupling

Groove-Fit Range



ALUMINIUM PIPES

PART NO.	SIZE MM/SM (DIA OF PIPE)	OD(MM)
PG-82.900.040.106	40	5.8 mt.
PG-82.900.050.106	50	5.8 mt.
PG-82.900.063.106	63	5.8 mt.
PG-82.900.090.106	90	5.8 mt.
PG-82.900.100.106	100	5.8 mt.
PG-82.900.150.106	150	5.8 mt.
PG-82.900.200.106	200	5.8 mt.
PG-82.900.250.106	250	5.8 mt.

NOTE: For Pipes required with Grooved ends to be used with Grooved Couplings, the above model nos to be used with "-G" added as a suffix at the end of the model number.



GROOVE COUPLING

PART NO.	SIZE MM/SM (DIA OF PIPE)
PNGR0240	40
PNGR0250	50
PNGR0263	63
PNGR0290	90
PNGR02100	100
PNGR02150	150
PNGR02200	200
PNGR02250	250



MALE ADAPTOR

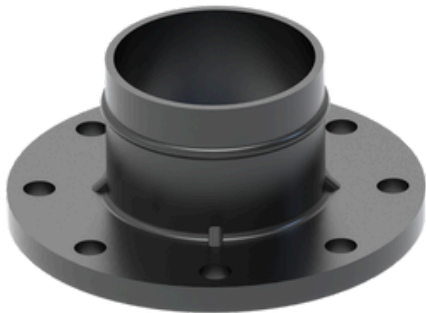
PART NO.	SIZE MM/SM (DIA OF PIPE)
PNGRM0240	40 X 1.1/2"
PNGRM50112	50 X 1.1/2"
PNGRM5002	50 X 2"
PNGRM6302	63 X 2"
PNGRM63212	63 X 2.1/2"
PNGRM9003	90 X 3"
PNGRM1002	100 X 2"
PNGRM1003	100 X 3"

Groove-Fit Range



FEMALE ADAPTOR

PART NO.	SIZE MM/SM (DIA OF PIPE)
PNGRF40112	40 X 1.1/2"
PNGRF50112	50 X 1.1/2"
PNGRF5002	50 X 2"
PNGRF6302	63 X 2"
PNGRF63212	63 X 2.1/2"
PNGRF90112	90 X 1.1/2"
PNGRF9003	90 X 3"
PNGRF1002	100 X 2"
PNGRF1003	100 X 3"



FLANGE ADAPTOR

PART NO.	SIZE MM/SM (DIA OF PIPE)
PNGR0550	50 X 50
PNGR0563	63 X 63
PNGR0590	90 X 90
PNGR05100	100 X 100
PNGR05150	150 X 150
PNGR05200	200 X 200
PNGR05250	250 X 250



EQUAL ELBOW

PART NO.	SIZE MM/SM (DIA OF PIPE)
PNGR0340	40
PNGR0350	50
PNGR0363	63
PNGR0390	90
PNGR03100	100
PNGR03150	150
PNGR03200	200
PNGR03250	250

Groove-Fit Range



EQUAL TEE

PART NO.	SIZE MM/SM (DIA OF PIPE)
PNGR0440	40
PNGR0450	50
PNGR0463	63
PNGR0490	90
PNGR04100	100
PNGR04150	150
PNGR04200	200
PNGR04250	250



FEMALE THREADED TEE

PART NO.	SIZE MM/SM (DIA OF PIPE)
PNFRT50112	50 X 1.1/2"
PNFRT63112	63 X 1.1/2"
PNFRT90212	90 X 2.1/2"
PNFRT15033	150 X 3"



REDUCING TEE

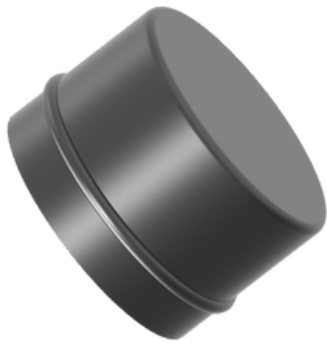
PART NO.	SIZE MM/SM (DIA OF PIPE)
PNRT6350	65 X 50
PNRT9050	90 X 50
PNRT9063	90 X 63
PNRT150100	150 X 100

Groove-Fit Range



REDUCING STRAIGHT CONNECTOR

PART NO.	SIZE MM/SM (DIA OF PIPE)	PART NO.	SIZE MM/SM (DIA OF PIPE)
PNRSC5020	50 X 20	PNRSC9063	90 X 63
PNRSC5025	50 X 25	PNRSC10050	100 X 50
PNRSC5040	50 X 40	PNRSC10063	100 X 63
PNRSC6325	63 X 25	PNRSC10090	100 X 90
PNRSC6340	63 X 40	PNRSC150100	150 X 100
PNRSC6350	63 X 50	PNRSC200100*	200 X 100
PNRSC9050	90 X 50	PNRSC250100	250 X 100



END CUP

PART NO.	SIZE MM/SM (DIA OF PIPE)
PNGR1040	40
PNGR1050	50
PNGR1063	63
PNGR1090	90
PNGR10100	100
PNGR10150	150
PNGR10200	200
PNGR10250	250



SADDLE BRANCH

PART NO.	SIZE MM/SM (DIA OF PIPE)	PART NO.	SIZE MM/SM (DIA OF PIPE)
PNSB2212	22 X 1/2"	PNSB7502	75 X 2"
PNSB2512	25 X 1/2"	PNSB9001	90 X 1"
PNSB2812	28 X 1/2"	PNSB9002	90 X 2"
PNSB3212	32 X 1/2"	PNSB10001	100 X 1"
PNSB4012	40 X 1/2"	PNSB10002	100 X 2"
PNSB4034	40 X 3/4"	PNSB11001	110 X 1"
PNSB5012	50 X 1/2"	PNSB11002	110 X 2"
PNSB5034	50 X 3/4"	PNSB15001	150 X 1"
PNSB5001	50 X 1"	PNSB15002	150 X 2"
PNSB6312	63 X 1/2"	PNSB15003	150 X 3"
PNSB6334	63 X 3/4"	PNSB25002	200 X 2"
PNSB6301	63 X 1"	PNSB25003	250 X 3"
PNSB7501	75 X 1"		

Accessories Range

Accessories are critical components used in conjunction with pipe fittings to secure, support, and stabilize piping systems in various industrial, commercial, and residential applications. These accessories ensure that pipes remain firmly in place and are safely routed through different structures.

Accessories



Accessories



QUICK DROP

PART NO.	SIZE MM/SM (DIA OF PIPE)
PNQD2520	25 X 20
PNQD3220	32 X 20
PNQD4020	40 X 20
PNQD4025	40 X 25
PNQD5020	50 X 20
PNQD5025	50 X 25
PNQD5032	50 X 32
PNQD6320	63 X 20
PNQD6325	63 X 25
PNQD6332	63 X 32
PNQD9020	90 X 20
PNQD9025	90 X 25
PNQD10020	100 X 20
PNQD10025	100 X 25



SADDLE WITH ELBOW OUTLET

PART NO.	SIZE MM/SM (DIA OF PIPE)
PNSE2520	25 X 20
PNSE3220	32 X 20
PNSE4020	40 X 20
PNSE4025	40 X 25
PNSE5020	50 X 20
PNSE5025	50 X 25
PNSE5032	50 X 32
PNSE6320	63 X 20
PNSE6325	63 X 25
PNSE6332	63 X 32
PNSE9020	90 X 20
PNSE9025	90 X 25
PNSE10032	100 X 32
PNSE10020	100 X 20
PNSE10025	100 X 25

Accessories



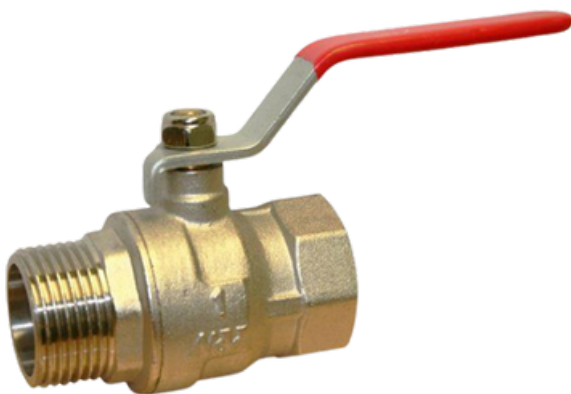
INLINE BALL VALVE

PART NO.	DN
PNBV2020	20
PNBV2525	25
PNBV4040	40
PNBV5050	50



BRASS F/F BALL VALVE

PART NO.	DN
PNBV15	15-1/2"
PNBV20	20-3/4"
PNBV25	25-1"
PNBV32	32-1.1/4"
PNBV40	40-1.1/2"
PNBV50	50-2"
PNBV63	63- 2.1/2"
PNBV90	90 - 3"
PNBV100	100-4"



BRASS M/F BALL VALVE

PART NO.	DN
PNMFBV12	1/2"
PNMFBV34	3/4"
PNMFBV01	1"
PNMFBV114	1.1/4"
PNMFBV112	1.1/2"
PNMFBV02	2"
PNMFBV212	2.1/2"

Accessories



AUDCO BALL VALVE (CS BODY)

PART NO.	DN
PNAUD15	1/2"
PNAUD20	3/4"
PNAUD25	1"
PNAUD32	1.1/4"
PNAUD40	1.1/2"
PNAUD50	2"



BUTTERFLY VALVE

PART NO.	DN
PNBFV63	2.1/2"
PNBFV90	3"
PNBFV100	4"
PNBFV150	6"
PNBFV200	8"



RUBBER LINED CLAMP WALL FIXING

PART NO.	SIZE MM/SM (DIA OF PIPE)
PNRLC20	20
PNRLC25	25
PNRLC32	32
PNRLC40	40
PNRLC50	50
PNRLC63	63
PNRLC75	75
PNRLC90	90
PNRLC100	100
PNRLC110	110
PNRLC150	150
PNRLC160	160

Accessories

RUBBER LINED CLAMP WITHOUT WALL FIXING

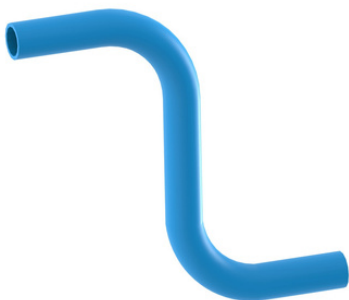


PART NO.	SIZE MM/SM (DIA OF PIPE)
PNRLC20W	20
PNRLC25W	25
PNRLC32W	32
PNRLC40W	40
PNRLC50W	50
PNRLC63W	63
PNRLC90W	90
PNRLC100W	100
PNRLC150W	150



U - BEND PIPE

PART NO.	SIZE MM/SM (DIA OF PIPE)
20UBEND	20
25UBEND	25
40UBEND	40



S - BEND PIPE

PART NO.	SIZE MM/SM (DIA OF PIPE)
20SBEND	20
25SBEND	25
40SBEND	40

Accessories



MS DOUBLE NIPPLE

PART NO.	SIZE
P-1212	1/2" X 1/2"
P-3412	3/4" X 1/2"
P-3434	3/4" X 3/4"
P-1112	1" X 1/2"
P-1134	1" X 3/4"
P-1111	1" X 1"
P-11412	1.1/4" X 1/2"
P-11434	1.1/4" X 3/4"
P-11411	1.1/4" X 1"
P-114114	1.1/4" X 1.1/4"
P-11212	1.1/2" X 1/2"
P-11234	1.1/2" X 3/4"
P-11211	1.1/2" X 1"
P-112114	1.1/2" X 1.1/4"
P-112112	1.1/2" X 1.1/2"
P-2212	2" X 1/2"
P-2234	2" X 3/4"
P-2211	2" X 1"
P-22114	2" X 1.1/4"
P-22112	2" X 1.1/2"
P-2222	2" X 2"
P-212114	2.1/2" X 1.1/4"
P-212112	2.1/2" X 1.1/2"
P-21222	2.1/2" X 2"
P-212212	2.1/2" X 2.1/2"
P-33112	3" X 1.1/2"
P-3322	3" X 2"
P-33212	3" X 2.1/2"
P-3333	3" X 3"

Accessories



MALE FEMALE BUSHING

PART NO.	SIZE
P-3412MF	3/4" X 1/2"
P-1112MF	1" X 1/2"
P-1134MF	1" X 3/4"
P-11434MF	1.1/4" X 3/4"
P-11411MF	1.1/4" X 1"
P-11211MF	1.1/2"x1"
P112114F	1.1/2"x1.1/4"
P-2211MF	2"x1"
P-22114MF	2"x1.1/4"
P-22112MF	2"x1.1 /2 "
P-33112MF	3"x1.1/2"
P-3322MF	3"x2"



NON RETURN VALVE

PART NO.	SIZE
P-12NRV	1/2"
P-34NRV	3/4"
P-11NRV	1"
P-114NRV	1.1/4"
P-112NRV	1.1/2"
P-22NRV	2"
P-212NRV	2.1/2"
P-33NRV	3"
P-44NRV	4"

Accessories



PRESSURE REDUCING VALVE

PART NO.	DN SIZE
P-12PRV	1/2"
P-34PRV	3/4"
P-11PRV	1"
P-114PRV	1.1/4"
P-112PRV	1.1/2"
P-22PRV	2"
P-212PRV	2.1/2"
P-33PRV	3"
P-44PRV	4"



THREADED FLANGE

PART NO.	SIZE
PNTFLG15	1/2"
PNTFLG20	3/4"
PNTFLG25	1"
PNTFLG32	1.1/4"
PNTFLG40	1.1/2"
PNTFLG50	2"
PNTFLG63	2.1/2"
PNTFLG80	3"



BLIND FLANGE

PART NO.	SIZE
PNBFLG63	2.1/2"
PNBFLG80	3"
PNBFLG100	4"
PNBFLG150	6"

Accessories



L' METAL SUPPORT BRACKET

PART NO.	SIZE
P-LMSB6-6	6" X 6"
P-LMSB6-8	6" X 8"
P-LMSB8-8	8" X 8"
P-LMSB8-10	8" X 10"
P-LMSB10-10	10" X 10"
P-LMSB8-12	8" X 12"
P-LMSB10-12	10" X 12"
P-LMSB12-12	12" X 12"



L' METAL SUPPORT BRACKET

PART NO.	SIZE MM/SM (DIA OF PIPE)
P-LMSB6-4	6" X 4"
P-LMSB8-4	8" X 4"
P-LMSB10-4	10" X 4"
P-LMSB12-4	12" X 4"



GIRDER CLAMP

PART NO.	SIZE
P-GCMP08	40 X 40 X 20
P-GCMP10	50 X 50 X 25

Accessories



TIE ROD

PART NO.	THICKNESS (MM) SIZE
P-TIEROD8X1	8mm X 1mtr
P-TIEROD8X2	8mm X 2mtr
P-TIEROD8X3	8mm X 3mtr
P-TIEROD10X1	10mm X 1mtr
P-TIEROD10X2	10mm X 2mtr
P-TIEROD10X3	10mm X 3mtr



RUBBER HOSE PIPE

PART NO.	SIZE
P-1201HOSE PIPE	1/2" X 01mtr
P-1202HOSE PIPE	1/2" X 02mtr
P-3401HOSE PIPE	3/4" X 01mtr
P-3402HOSE PIPE	3/4" X 02mtr
P-1101HOSE PIPE	1" X 01mtr
P-1102HOSE PIPE	1" X 02mtr
P-11401HOSE PIPE	1.1/4" X 01mtr
P-11402HOSE PIPE	1.1/4" X 02mtr
P-11201HOSE PIPE	1.1/2" X 01mtr
P-11202HOSE PIPE	1.1/2" X 02mtr
P-2201HOSE PIPE	2" X 01mtr
P-2202HOSE PIPE	2" X 02mtr

Accessories



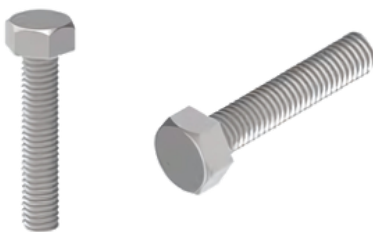
PRESSURE GAUGE

PART NO.	SIZE
P-4PRESSURE GAUGE	4" DIAL X 1/2" BSP THREAD
P-6PRESSURE GAUGE	6" DIAL X 1/2" BSP THREAD
P-8PRESSURE GAUGE	8" DIAL X 1/2" BSP THREAD



PRESSURE GAUGE WITH GLYCERINE FILLED

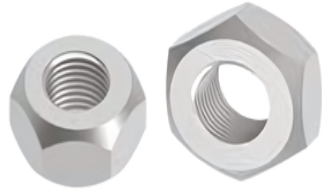
PART NO.	SIZE
P-4PGWGF	4" DIAL X 1/2" BSP THREAD
P-6PGWGF	6" DIAL X 1/2" BSP THREAD
P-8PGWGF	8" DIAL X 1/2" BSP THREAD



BOLT

PART NO.	SIZE
P-901BOLT	8MM X 1"
P-902BOLT	8MM X 2"
P-903BOLT	8MM X 3"
P-1001BOLT	10MM X 1"
P-1002BOLT	10MM X 2"
P-1003BOLT	10MM X 3"
P-1201BOLT	12MM X 1"
P-1202BOLT	12MM X 2"
P-1203BOLT	12MM X 3"
P-1604BOLT	16MM X 4"
P-1605BOLT	16MM X 5"
P-1606BOLT	16MM X 6"
P-1607BOLT	16MM X 7"
P-1608BOLT	16MM X 8"

Accessories



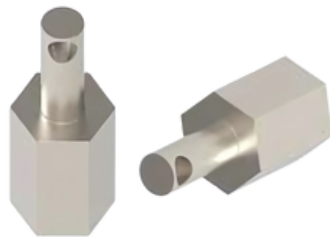
NUT

PART NO.	SIZE
P-0808NUT	8MM
P-1010NUT	10MM
P-1212NUT	12MM
P-1616NUT	16MM



WASHER

PART NO.	SIZE
P-0808WASHER	8MM
P-1010WASHER	10MM
P-1212WASHER	12MM
P-1616WASHER	16MM



PIN ADAPTOR

PART NO.	SIZE
P-08PIN ADAPTOR	8MM



SCREW

PART NO.	SIZE
P-0601SCREW	6MM X 1"



SELF SCREW

PART NO.	SIZE
P-0401 SELF SCREW	4MM X 1"

Accessories



THREADED BASE PLATE

PART NO.	SIZE
P-08 THRD BASE PLATE	8MM
P-10 THRD BASE PLATE	10MM
P-12 THRD BASE PLATE	12MM



LOCTITE

PART NO.	SIZE
P-242 LOCKTITE	LOCTITE 242



TEFLON TAPE

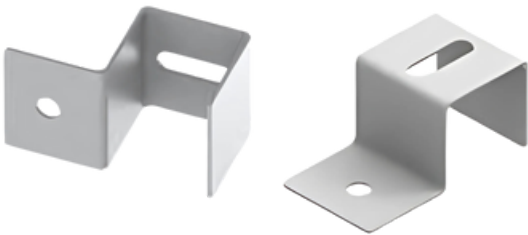
PART NO.	SIZE
P-TEFLON TAPE	TEFLON TAPE

Accessories



BASE PLATE

PART NO.	SIZE
P-BASE PLATE	BASE PLATE



UCLAMPS FOR CLIPS

PART NO.	SIZE
P-UCLAMPS FOR CLIPS	UCLAMPS FOR CLIPS



UCLAMPS

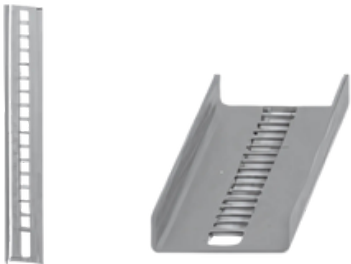
PART NO.	SIZE
P-UCLAMPS FOR PORTING BLOCKS	UCLAMPS FOR PORTING BLOCKS
P-UCLAMPS FOR PURGE B/V	UCLAMPS FOR PURGE B/V

Accessories



SLOTTED CHANNELS

PART NO.	SIZE
P-4 SLOTTED CHANNELS	4 FEET



STRAIGHT ANGLE

PART NO.	SIZE
P-2 STRAIGHT ANGLE	2 FEET
P-4 STRAIGHT ANGLE	4 FEET

Stainless Steel Range

With rich experiences in piping system connection and sealing technologies, and manufacturing of high quality 304 and 316L stainless steel pipes, **Luthra Pneumsys PiPress®** offers superior performance stainless steel pipe system to different customers in various fields for their critical requirements for different gases and fluid.

Stainless Steel **Range**

15mm - 300mm SS304 **Press & Groove Fittings**



TECHNICAL PARAMETERS

Industrial Compressed air, water supply , hospital ,school, hotel, electronics,food & beverages , medical treatment and pharmaceutical factory , fire fighting piping system.

MATERIAL

SS304 OR SS316L

NOMINAL PRESSURES

16BAR/232PSI

WORKING TEMPERATURE




-20° C TO 100° C

APPLICABLE FLUIDS

COMPRESSED AIR, WATER,
COOLING/CHILLED WATER,
SOLAR WATER, FUEL AND OIL,
GASES ETC.

Sealing Technologies

Luthra Pneumsys embedded sealing rings, with superior reliability and longevity, different options for compressed air, water, vacuum, nitrogen and other Inert gases, saturated steam, fuel & oil heating pump, cooling & chilled Water, solar water, fire water system etc.

SEALING CODE	DESCRIPTION	COLOR	WORKING TEMPERATURE	MAIN APPLICATION FLUIDS
EPDM	Ethylene Propylene Diene Mnomer		-20° C To 100° C - 4° F To 212° F	Cooling/chilled Water; Low Pressure Steam; Compressed Air; Fire Water System; Hydronic Heating; Waste Water.
NBR	Nitrile Butadiene Rubber		-20° C To 100° C - 4° F To 212° F	Hydrualic Oil, Inert Gases, Compressed Air, Lubricants.
FKM	Viton Fluoroelastomer		-20° C To 200° C - 4° F To 392° F	High Temp. Steam & Gas, Solar, Heating, Compressed Air, Acid Solutions, Chemicals, Inert Gases.

Stainless Steel Range



PIPES

PART NO.	DN	OD (MM)	THICKNESS (MM)	LENGHT (MM)
SSPNP01015	15	16.00	0.80	5800.00
SSPNP01020	20	20.00	1.00	5800.00
SSPNP01025	25	25.40	1.00	5800.00
SSPNP01032	32	32.00	1.20	5800.00
SSPNP01040	40	40.00	1.20	5800.00
SSPNP01050	50	50.80	1.20	5800.00
SSPNP01060	60	63.50	1.50	5800.00
SSPNP01065	65	76.10	1.50	5800.00
SSPNP01080	80	89.00	2.00	5800.00
SSPNP010100	100	101.60	2.00	5800.00
SSPNP010125	125	133.00	2.50	5800.00
SSPNP010150	150	159.00	2.50	5800.00
SSPNP010200	200	219.00	3.00	5800.00
SSPNP010250	250	273.00	4.00	5800.00
SSPNP010300	300	325.00	4.00	5800.00

CONNECTOR



PART NO.	DN
SSPN0215	15
SSPN0220	20
SSPN0225	25
SSPN0232	32
SSPN0240	40
SSPN0250	50
SSPN0260	60
SSPN0265	65
SSPN0280	80
SSPN02100	100

Stainless Steel **Range**



ADJUSTABLE CONNECTOR

PART NO.	DN
SSPN0615	15
SSPN0620	20
SSPN0625	25
SSPN0632	32
SSPN0640	40
SSPN0650	50
SSPN0660	60
SSPN0665	65
SSPN0680	80
SSPN06100	100



REDUCING CONNECTOR

PART NO.	DN
SSPNR2015	20 X 15
SSPNR2515	25 X 15
SSPNR2520	25 X 20
SSPNR3215	32 X 15
SSPNR3220	32 X 20
SSPNR3225	32 X 25
SSPNR4015	40 X 15
SSPNR4020	40 X 20
SSPNR4025	40 X 25
SSPNR4032	40 X 32
SSPNR5015	50 X 15
SSPNR5020	50 X 20
SSPNR5025	50 X 25
SSPNR5032	50 X 32
SSPNR5040	50 X 40
SSPNR6032	60 X 32
SSPNR6040	60 X 40
SSPNR6050	60 X 50
SSPNR6532	65 X 32
SSPNR6540	65 X 40
SSPNR6550	65 X 50
SSPNR6560	65 X 60
SSPNR8032	80 X 32

Stainless Steel **Range**



A-90° ELBOW

PART NO.	DN
SSPN0315	15
SSPN0320	20
SSPN0325	25
SSPN0332	32
SSPN0340	40
SSPN0350	50
SSPN0360	60
SSPN0365	65
SSPN0380	80
SSPN03100	100



B-90° ELBOW

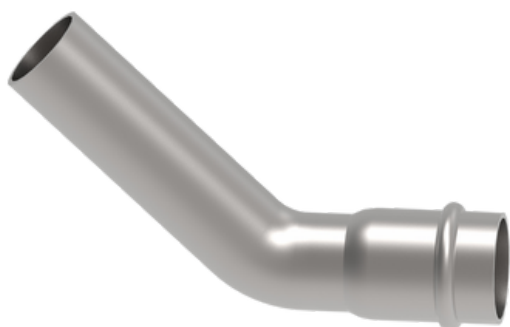
PART NO.	DN
SSPN3215	15
SSPN3220	20
SSPN3225	25
SSPN3232	32
SSPN3240	40
SSPN3250	50
SSPN3260	60
SSPN3265	65
SSPN3280	80
SSPN32100	100

Stainless Steel **Range**



A-45° ELBOW

PART NO.	DN
SSPN5215	15
SSPN5220	20
SSPN5225	25
SSPN5232	32
SSPN5240	40
SSPN5250	50
SSPN5260	60
SSPN5265	65
SSPN5280	80
SSPN52100	100



B-45° ELBOW

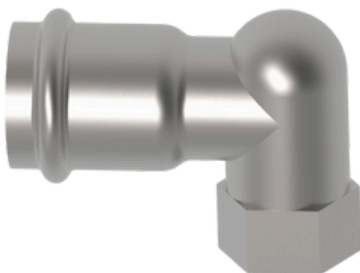
PART NO.	DN
SSPN5315	15
SSPN5320	20
SSPN5325	25
SSPN5332	32
SSPN5340	40
SSPN5350	50
SSPN5360	60
SSPN5365	65
SSPN5380	80
SSPN53100	100

Stainless Steel Range



MALE 90° ELBOW

PART NO.	DN
SSPNME1512	15 X 1/2"
SSPNME2012	20 X 1/2"
SSPNME2034	20 X 3/4"
SSPNME2512	25 X 1/2"
SSPNME2534	25 X 3/4"
SSPNME2501	25 X 1"
SSPNME3201	32 X 1"
SSPNME32114	32 X 1.1/4"
SSPNME40114	40 X 1.1/4"
SSPNME40112	40 X 1.1/2"
SSPNME50112	50 X 1.1/2"
SSPNME5002	50 X 2"



FEMALE SHORT 90° ELBOW

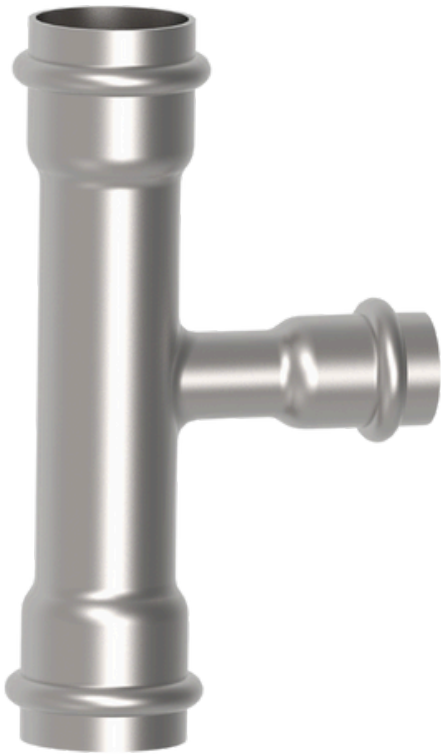
PART NO.	DN
SSPN321512	15 X 1/2"
SSPN322012	20 X 1/2"
SSPN322034	20 X 3/4"
SSPN322501	25 X 1"



FEMALE 90° ELBOW

PART NO.	DN
SSPNFE1512	15 X 1/2"
SSPNFE2012	20 X 1/2"
SSPNFE2034	20 X 3/4"
SSPNFE2512	25 X 1/2"
SSPNFE2534	25 X 3/4"
SSPNFE2501	25 X 1"
SSPNFE3201	32 X 1"
SSPNFE32114	32 X 1.1/4"
SSPNFE40114	40 X 1.1/4"
SSPNFE40112	40 X 1.1/2"
SSPNFE50112	50 X 1.1/2"
SSPNFE5002	50 X 2"

Stainless Steel Range



REDUCING TEE

PART NO.	DN
SSPN412015	20 X 15
SSPN412515	25 X 15
SSPN412520	25 X 20
SSPN413215	32 X 15
SSPN413220	32 X 20
SSPN413225	32 X 25
SSPN414015	40 X 15
SSPN414020	40 X 20
SSPN414025	40 X 25
SSPN414032	40 X 32
SSPN415015	50 X 15
SSPN415020	50 X 20
SSPN415025	50 X 25
SSPN415032	50 X 32
SSPN415040	50 X 40
SSPN416020	60 X 20
SSPN416025	60 X 25
SSPN416032	60 X 32
SSPN416040	60 X 40
SSPN416050	60 X 50
SSPN416520	65 X 20

PART NO.	DN
SSPN416525	65 X 25
SSPN416532	65 X 32
SSPN416540	65 X 40
SSPN416550	65 X 50
SSPN416560	65 X 60
SSPN418020	80 X 20
SSPN418025	80 X 25
SSPN418032	80 X 32
SSPN418040	80 X 40
SSPN418050	80 X 50
SSPN418060	80 X 60
SSPN418065	80 X 65
SSPN4110020	100 X 20
SSPN4110025	100 X 25
SSPN4110032	100 X 32
SSPN4110040	100 X 40
SSPN4110050	100 X 50
SSPN4110060	100 X 60
SSPN4110065	100 X 65
SSPN4110080	100 X 80

Stainless Steel **Range**



EQUAL TEE

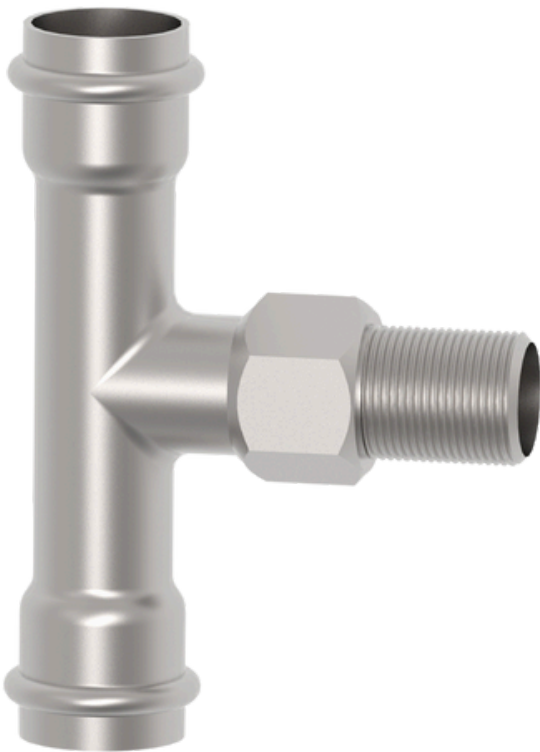
PART NO.	DN
SSPN0415	15
SSPN0420	20
SSPN0425	25
SSPN0432	32
SSPN0440	40
SSPN0450	50
SSPN0460	60
SSPN0465	65
SSPN0480	80
SSPN04100	100



FEMALE TEE

PART NO.	DN
SSPNFT1512	15 X 1/2"
SSPNFT2012	20 X 1/2"
SSPNFT2034	20 X 3/4"
SSPNFT2512	25 X 1/2"
SSPNFT2534	25 X 3/4"
SSPNFT2501	25 X 1"
SSPNFT3212	32 X 1/2"
SSPNFT3234	32 X 3/4"
SSPNFT3201	32 X 1"
SSPNFT32114	32 X 1.1/4"
SSPNFT4012	40 X 1/2"
SSPNFT4034	40 X 3/4"

Stainless Steel **Range**



MALE TEE

PART NO.	DN
SSPNMT1512	15 X 1/2"
SSPNMT2012	20 X 1/2"
SSPNMT2034	20 X 3/4"
SSPNMT2512	25 X 1/2"
SSPNMT2534	25 X 3/4"
SSPNMT2501	25 X 1"
SSPNMT3212	32 X 1/2"
SSPNMT3234	32 X 3/4"
SSPNMT3201	32 X 1"
SSPNMT32114	32 X 1.1/4"
SSPNMT4012	40 X 1/2"
SSPNMT4034	40 X 3/4"
SSPNMT4001	40 X 1"
SSPNMT40114	40 X 1.1/4"
SSPNMT40112	40 X 1.1/2"
SSPNMT5012	50 X 1/2"
SSPNMT5034	50 X 3/4"
SSPNMT5001	50 X 1"
SSPNMT50114	50 X 1.1/4"
SSPNMT50112	50 X 1.1/2"
SSPNMT5002	50 X 2"

Stainless Steel Range



MALE ADAPTOR

PART NO.	DN
SSPN051512	15 X 1/2"
SSPN052012	20 X 1/2"
SSPN052034	20 X 3/4"
SSPN052512	25 X 1/2"
SSPN052534	25 X 3/4"
SSPN052501	25 X 1"
SSPN053201	32 X 1"
SSPN0532114	32 X 1.1/4"
SSPN0540114	40 X 1.1/4"
SSPN0540112	40 X 1.1/2"
SSPN0550112	50 X 1.1/2"
SSPN055002	50 X 2"
SSPN0560212	60 X 2.1/2"
SSPN0565212	65 X 2.1/2"
SSPN058003	80 X 3"
SSPN0510004	100 X 4"



FEMALE ADAPTOR

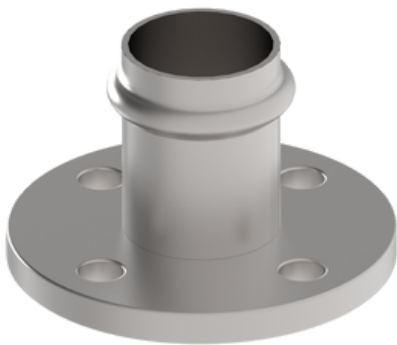
PART NO.	DN
SSPN511512	15 X 1/2"
SSPN512012	20 X 1/2"
SSPN512034	20 X 3/4"
SSPN512512	25 X 1/2"
SSPN512534	25 X 3/4"
SSPN512501	25 X 1"
SSPN513201	32 X 1"
SSPN5132114	32 X 1.1/4"
SSPN5140114	40 X 1.1/4"
SSPN5140112	40 X 1.1/2"
SSPN5150112	50 X 1.1/2"
SSPN515002	50 X 2"
SSPN5160212	60 X 2.1/2"
SSPN5165212	65 X 2.1/2"
SSPN518003	80 X 3"
SSPN5110004	100 X 4"

Stainless Steel Range



SWIVEL FEMALE ADAPTER

PART NO.	SIZE MMD /NSM (DIA OF PIPE)
SSPN541512	15 X 1/2"
SSPN541534	15 X 3/4"
SSPN542012	20 X 1/2"
SSPN542034	20 X 3/4"
SSPN542501	25 X 1"
SSPN5432114	32 X 1.1/4"
SSPN5440112	40 X 1.1/2"



FLANGE ADAPTOR

PART NO.	DN
SSPNFLG25	25
SSPNFLG32	32
SSPNFLG40	40
SSPNFLG50	50
SSPNFLG60	60
SSPNFLG65	65
SSPNFLG80	80
SSPNFLG100	100



END CAP

PART NO.	DN
SSPN8615	15
SSPN8620	20
SSPN8625	25
SSPN8632	32
SSPN8640	40
SSPN8650	50
SSPN8660	60
SSPN8665	65
SSPN8680	80
SSPN86100	100

Stainless Steel Range



GROOVED CONNECTOR

PART NO.	DN
SSPN02125	125
SSPN02150	150
SSPN02200	200
SSPN02250	250
SSPN02300	300



GROOVED & PRESS REDUCING CONNECTOR

PART NO.	DN
SSPN2112550	125 X 50
SSPN2112565	125 X 65
SSPN2112580	125 X 80
SSPN21125100	125 X 100
SSPN2115050	150 X 50
SSPN21150100	150 X 100
SSPN2120050	200 X 50
SSPN2120065	200 X 65
SSPN2120080	200 X 80
SSPN21200100	200 X 100
SSPN2125050	250 X 50
SSPN2125065	250 X 65
SSPN2125080	250 X 80
SSPN21250100	250 X 100
SSPN2130050	300 X 50
SSPN2130065	300 X 65
SSPN2130080	300 X 80
SSPN21300100	300 X 100

Stainless Steel Range



GROOVED REDUCING CONNECTOR

PART NO.	DN
SSPN21150125	150 X 125
SSPN21200125	200 X 125
SSPN21200150	200 X 150
SSPN21250125	250 X 125
SSPN21250150	250 X 150
SSPN21250200	250 X 200
SSPN21300125	300 X 125
SSPN21300150	300 X 150
SSPN21300200	300 X 200
SSPN21300250	300 X 250



GROOVED 90° ELBOW

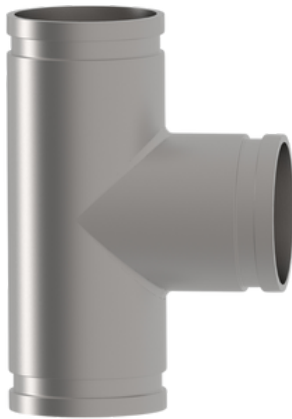
PART NO.	DN
SSPN03125	125
SSPN03150	150
SSPN03200	200
SSPN03250	250
SSPN03300	300



GROOVED 45° ELBOW

PART NO.	DN
SSPN52125	125
SSPN52150	150
SSPN52200	200
SSPN52250	250
SSPN52300	300

Stainless Steel **Range**



GROOVED EQUAL TEE

PART NO.	DN
SSPN04125	125
SSPN04150	150
SSPN04200	200
SSPN04250	250
SSPN04300	300



GROOVED & PRESS REDUCING TEE

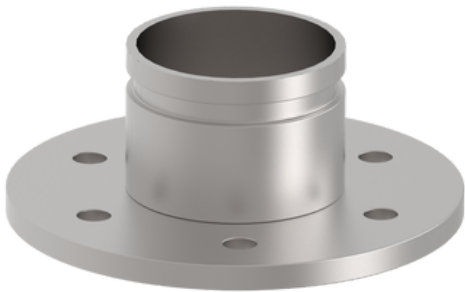
PART NO.	DN
SSPN2512550	125 X 50
SSPN2512565	125 X 65
SSPN2512580	125 X 80
SSPN25125100	125 X 100
SSPN2515050	150 X 50
SSPN25150100	150 X 100
SSPN2520050	200 X 50
SSPN2520065	200 X 65
SSPN2520080	200 X 80
SSPN25200100	200 X 100
SSPN2525050	250 X 50
SSPN2525065	250 X 65
SSPN2525080	250 X 80
SSPN25250100	250 X 100
SSPN2530050	300 X 50
SSPN2530065	300 X 65
SSPN2530080	300 X 80
SSPN25300100	300 X 100

Stainless Steel Range



GROOVED REDUCING TEE

PART NO.	DN
SSPN41150125	150 X 125
SSPN41200125	200 X 125
SSPN41200150	200 X 150
SSPN41250125	250 X 125
SSPN41250150	250 X 150
SSPN41250200	250 X 200
SSPN41300125	300 X 125
SSPN41300150	300 X 150
SSPN41300200	300 X 200
SSPN41300250	300 X 250



GROOVED FLANGE

PART NO.	DN
SSPNFLG125	125
SSPNFLG150	150
SSPNFLG200	200
SSPNFLG250	250
SSPNFLG300	300



GROOVED END CAP

PART NO.	DN
SSPN86125	125
SSPN86150	150
SSPN86200	200
SSPN86250	250
SSPN86300	300

Stainless Steel Range



FEMALE BALL VALVE

PART NO.	DN
SSPN82115	15
SSPN82120	20
SSPN82125	25
SSPN82132	32
SSPN82140	40
SSPN82150	50
SSPN82165	65
SSPN82180	80
SSPN821100	100



O-CLAMP

PART NO.	DN
SSPN80115	15
SSPN80120	20
SSPN80125	25
SSPN80132	32
SSPN80140	40
SSPN80150	50
SSPN80160	60
SSPN80165	65
SSPN80180	80
SSPN801100	100

Stainless Steel Range



U-CLAMP

PART NO.	DN
SSPN80215	15
SSPN80220	20
SSPN80225	25
SSPN80232	32
SSPN80240	40
SSPN80250	50
SSPN80260	60
SSPN80265	65
SSPN80280	80
SSPN802100	100
SSPN802125	125
SSPN802150	150
SSPN802200	200
SSPN802250	250
SSPN802300	300



FEMALE GATE VALVE

PART NO.	DN
SSPN82415	15
SSPN82420	20
SSPN82425	25
SSPN82432	32
SSPN82440	40
SSPN82450	50
SSPN82465	65
SSPN82480	80
SSPN824100	100

Stainless Steel Range

FEMALE GLOBE VALVE



PART NO.	DN
SSPN82515	15
SSPN82520	20
SSPN82525	25
SSPN82532	32
SSPN82540	40
SSPN82550	50
SSPN82565	65
SSPN82580	80
SSPN825100	100

FLANGE GLOBE VALVE



PART NO.	DN	PART NO.	DN
SSPN82715	15	SSPN82780	80
SSPN82720	20	SSPN827100	100
SSPN82725	25	SSPN827125	125
SSPN82732	32	SSPN827150	150
SSPN82740	40	SSPN827200	200
SSPN82750	50	SSPN827250	250
SSPN82765	65	SSPN827300	300

FLANGE GATE VALVE



PART NO.	DN	PART NO.	DN
SSPN82615	15	SSPN82680	80
SSPN82620	20	SSPN826100	100
SSPN82625	25	SSPN826125	125
SSPN82632	32	SSPN826150	150
SSPN82640	40	SSPN826200	200
SSPN82650	50	SSPN826250	250
SSPN82665	65	SSPN826300	300

Stainless Steel Range

ANGLE SEAT VALVE - FEMALE



PART NO.	DN	ACTUATOR DIA (MM)	D	R	P	G	H	L	L1	T
SSPNAS15	15	50	62	33.5	ZG 1/8"	ZG 1/2"	126	137	68	13
SSPNAS20	20	50	62	33.5	ZG 1/8"	ZG 3/4"	138	144	75	16
SSPNAS25	25	50	62	33.5	ZG 1/8"	ZG 1"	148	156	90	16
SSPNAS32	32	63	76	42	ZG 1/8"	ZG1 1/4"	182	188	110	21
SSPNAS40	40	63	76	42	ZG 1/8"	ZG1 1/2"	182	190	116	21
SSPNAS50	50	63	76	42	ZG 1/8"	ZG2"	195	205	136	22
SSPNAS65	65	80	96	52	ZG 1/8"	ZG2 1/2"	280	252	185	30
SSPNAS80	80	100	114	63	ZG 1/8"	ZG3"	320	280	220	33
SSPNAS100	100	100	114	63	ZG 1/8"	ZG 4"	350	300	235	35

ANGLE SEAT VALVE - FLANGE



PART NO.	DN	ACTUATOR DIA (MM)	L	T	F	D	C	B	A	H
SSPNAS115	15	50	120	14	2	95	65	40	185	145
SSPNAS120	20	50	130	14	2	105	75	50	188	155
SSPNAS125	25	50	140	14A16	2	115	85	60	208	165
SSPNAS132	32	63	150	16	2	135	100	70	225	195
SSPNAS140	40	63	180	16	2	145	110	80	240	205
SSPNAS150	50	63	195	16	2	160	125	92	265	228
SSPNAS165	65	80	230	18	2	185	145	115	290	264
SSPNAS180	80	100	250	18	2	195	160	130	330	300
SSPNAS1100	100	100	295	18	2	215	180	150	350	320

15 mm - 168 mm SS316L

Press Fittings

316L STAINLESS STEEL PUSH-IN FITTING

Stainless steel fittings from pegler yorkshire make jointing easier, faster And more cost effective than other jointing methods - a fittings System which simply presses together in seconds to create a perfect joint, every time.



SO MANY STAINLESS STEEL BENEFITS, AND SO MUCH CHOICE

- 1.Safety: no naked flames. 2.System does not need to be 'dry for effective jointing. 3.No localized annealing from high-temperature working.
- 4.Perfectly clean internal bore - less finishing or cleaning required.
- 5.Electrical continuity assured when the xpress jointing process is complete. Or flux residue - reduced risk of corrosion.
- 6.Xpress fittings have a wide range of approvals including kitemark, wras And dvgw.
- 7.Major savings in installation time and cost compared with traditional jointing methods.
- 8.Ideal for diverse applications such as domestic maintenance and Refurbishment, new build and large-scale public sector project.



COUPLING



REDUCER



FEMALE ADAPTOR



ELBOW

FLANGE ADAPTOR

15 mm - 168 mm SS316L

Press Fittings

Stainless Steel fittings use the same O Ring technology to provide the best and widest range of heat free jointing. It is important to check compatibility between the O Ring and the fluid and the fluid in the system. The table below is a guide for the Contractor, installer and Specifier, and

EPDM - Ethylene Propylene Diene Monomer: This is the standard, BLACK O Ring that is used in stainless steel COPPER ranges. This material is also used for the Leak before Press O Rings used in Stainless steel CARBON and Xpress STAINLESS STEEL.

HNBR - Hydrogenated Nitrile Rubber: This is the YELLOW O Ring that is only used in Stainless Steel GAS.

FPM - Fluorocarbon Rubber: This is the GREEN O Ring that is only used in stainless steel Solar.

Designation	Black	Yellow	Green
	EPDM Stainless Steel	HNBR Gas	FPM Solar
Maximum service temperature °C	180	100	230
Low service temperature °C	-50	-20	-20
Water/Steam Resistance			
Water/Steam resistance <40°C	✓✓✓	✓✓✓	✓✓✓
Water/Steam resistance <80°C	✓✓✓	✓✓	✓✓✓
Water/Steam resistance <150°C	✓✓	X	*✓✓
Water/Steam resistance >150°C	✓	X	*✓✓

Designation	Black	Yellow	Green
	EPDM Stainless Steel	HNBR Gas	FPM Solar
Fluids Resistance			
Acid Acetic 10% Formic	✓✓✓	✓	✓
Hydrochloric 20%	✓✓✓	X	✓
Nitric 30%	✓✓✓	✓	✓✓
Phosphoric 20%	✓✓✓	X	✓✓
Sulphuric 30%	✓✓✓	X	✓✓
Alkalis	✓✓	X	✓✓
Barium hydroxide			
Calcium hydroxide	✓✓✓	✓✓	✓✓✓
Sodium hydroxide	✓✓✓	✓✓	✓✓✓
Alcohols	✓✓✓	✓✓	✓✓
Butyl alcohol (Butanol)	✓✓✓	✓✓	✓✓
Ethyl alcohol (Ethanol)	✓✓	✓✓✓	✓✓✓
Methyl alcohol (Methanol)	✓✓	✓✓	✓✓
Amines	✓✓✓	✓✓✓	✓
Ethylene diamine	✓✓✓	✓✓✓	X
Ammonia – cold gas			
Ammonia – hot gas	✓✓✓	✓✓	X
Chlorides	✓✓✓	✓✓✓	X
Ammonium chloride	✓✓	X	X
Calcium chloride solution	✓✓	X	X
Magnesium chloride	✓✓✓	✓✓✓	✓✓✓
Zinc chloride	✓✓✓	✓✓✓	✓✓✓
Gases			
Butane	X	✓✓✓	✓✓✓
Carbon dioxide (dry)	✓✓	✓✓✓	✓✓✓
Chloride (wet)	✓	X	✓✓✓
Freon 12	✓✓	✓✓✓	✓✓
Freon 21	X	X	X
Freon 22	✓✓✓	X	X
Freon 134a	✓✓✓	•	X
Natural gas	X	✓✓✓	✓✓✓
Methane	X	✓✓✓	✓✓✓
Propane	X	✓✓✓	✓✓✓
Oils and Fuels			
ASTM No 1 oil	X	✓✓✓	✓✓✓
ASTM No 2 oil	X	✓✓✓	✓✓✓
ASTM No 3 oil	X	✓✓✓	✓✓✓
ASTM fuel A	X	✓✓✓	✓✓✓
ASTM fuel B	X	✓✓	✓✓✓
ASTM fuel C	X	✓	✓✓✓
Diesel oil	X	✓✓✓	✓✓✓
Diesel oil + RME (10%)	X	✓✓✓	✓✓✓
Mineral oil (low aromatic)	X	X	✓✓✓

Designation	Black	Yellow	Green
	EPDM Stainless Steel	HNBR Gas	FPM Solar
Oils and Fuels cont			
Hydraulic oils (petroleum base)	X	✓✓✓	✓✓✓
Lubricating oils	X	✓✓✓	✓✓✓
Paraffin	X	✓✓✓	✓✓✓
Petrol	X	✓✓✓	✓✓✓
Silicone oil/grease	✓✓✓	✓✓✓	✓✓✓
Transformer oils	X	✓✓✓	✓✓✓
Vegetable oils	✓	✓✓✓	✓✓✓
Solvents			
Acetone	✓✓✓	X	X
Benzene	X	X	✓✓✓
Carbon tetrachloride	X	✓	✓✓✓
Dimethyl formamide	✓✓	✓	X
Ethyl acetate	✓✓	X	X
Methyl ethyl ketone	✓✓✓	X	X
Tetrachloroethylene	X	X	✓✓✓
Toluene	X	X	✓✓✓
Turpentine	X	✓✓✓	✓✓✓
Xylene	X	X	✓✓
Miscellaneous			
Ethylene glycol	✓✓✓	✓✓✓	✓✓✓
Detergents	✓✓✓	✓✓✓	✓✓✓
Diethyl phthalate	✓✓	X	X
Formaldehyde	✓✓✓	✓	X
Hydrogen peroxide (90%)	✓✓	X	✓✓
Phosphate esters	✓✓✓	X	✓
Potassium nitrate	✓✓✓	✓✓✓	✓✓✓

Key to Media Table	
✓✓✓	Excellent – Recommended Good –
✓✓	Minor to Moderate effects Fair –
✓	Moderate to severe effects Poor –
X	Not recommended Insufficient
•	data available
* Conditions Apply	Temperature or other limitation affecting polymer choice

These tables refer to room temperature tests. For other conditions and additional media advice please refer to Pegler Yorkshire for advice.

Pneumatic Range

To make a connection, the tube is simply pushed in by hand; the unique patented **Luthra Pneumsys** - John Guest collect locking system then holds the tube firmly in place without deforming it or restricting flow.



4 mm -12 mm Pneumatic Push Fittings



STRAIGHT CONNECTOR

PART NO.	TUBE OD
PM0404E	4
PM0405E	5
PM0406E	6
PM0408E	8
PM0410E	10
PM0412E	12



STEM ELBOW

PART NO.	TUBE OD
PM220404E	4
PM220505E	5
PM220606E	6
PM220808E	8
PM221010E	10
PM221212E	12



BULKHEAD CONNECTOR

PART NO.	STEM OD	TUBE OD
PM1204E	4	4
PM1205E	5	5
PM1206E	6	6
PM1208E	8	8
PM1210E	10	10
PM1212E	12	12

4 mm -12 mm Pneumatic Push Fittings



EQUAL ELBOW

PART NO.	TUBE OD
PM0304E	4
PM0305E	5
PPM0306E	6
PM0308E	8
PM0310E	10
PM0312E	12



EQUAL TEE

PART NO.	TUBE OD
PM0204E	4
PM0205E	5
PM0206E	6
PM0208E	8
PM0210E	10
PM0212E	12



REDUCER

PART NO.	TUBE OD
PM060504E	4
PM060604E	4
PM060605E	5
PM060804E	4
PM060805E	5
PM060806E	6
PM061006E	6
PM061008E	8
PM061208E	8
PM061210E	10

4 mm -12 mm Pneumatic Push Fittings



STRAIGHT ADAPTOR

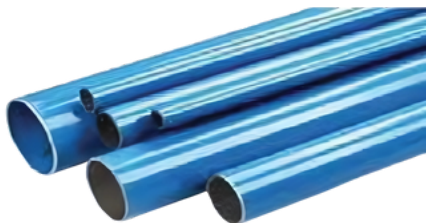
PART NO.	OD (BSP THREAD)
PM010411E	4 X 1/8"
PM010412E	4 X 1/4"
PM010511E	5 X 1/8"
PM010512E	5 X 1/4"
PM010611E	6 X 1/8"
PM010612E	6 X 1/4"
PM010811E	8 X 1/8"
PM010812E	8 X 1/4"
PM010813E	8 X 3/8"
PM011012E	10 X 1/4"
PM011013E	10 X 3/8"
PM011014E	10 X 1/2"
PM011213E	12 X 3/8"
PM011214E	12 X 1/2"



REDUCING ELBOW CONNECTOR

PART NO.	OD BSP THREAD	PART NO.	OD BSP THREAD
PM010411E	8 X 1/4"	PM010812E	4 X 1/8"
PM010412E	8 X 3/8"	PM010813E	4 X 1/4"
PM010511E	10 X 1/4"	PM011012E	5 X 1/8"
PM010512E	10 X 3/8"	PM011013E	5 X 1/4"
PM010611E	10 X 1/2"	PM011014E	6 X 1/8"
PM010612E	12 X 3/8"	PM011213E	6 X 1/4"
PM010811E	12 X 1/2"	PM011214E	8 X 1/8"

15 mm - 32 mm Pneumatic Compressed Air Fittings



ALUMINIUM PIPE

PART NO.	OD
AL-RM1513-3M	15 X 3
AL-RM1816-3M	18 X 3
AL-RM2220-3M	22 X 3
AL-RM2826-4M	28 X 4
AL-RM3229-3M	32 X 5



STRAIGHT CONNECTOR

PART NO.	OD
PM0412E	12
PM0415E	15
PM0418E	18
PM0422E	22
PM0428E	28



EQUAL ELBOW

PART NO.	OD
PM0312E	12
PM0315E	15
PM0318E	18
PM0322E	22
PM0328E	28
P-UG303B	32

15 mm - 32 mm Pneumatic Compressed Air Fittings



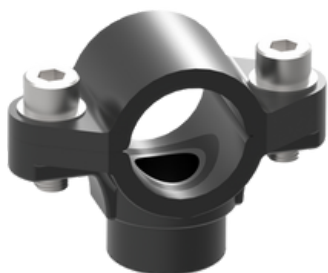
EQUAL TEE

PART NO.	OD
PM0212E	12
PM0215E	15
PM0218E	18
PM0222E	22
PM0228E	28
P-UG203B	32



ALUMINIUM MALE ADAPTOR

PART NO.	OD
AL011514E	15 X 1/2"
AL012216E	22 X 3/4"
AL012818E	28 X 1"



SADDLE DROP

PART NO.	OD
PNSB2212	22 X 1/2"
PNSB2812	28 X 1/2"



REDUCING TEE

PART NO.	PIPE OD ENDS	TUBE OD BRANCH
PM3018AE	18	15
PM3022AE	22	15

15 mm - 32 mm Pneumatic Compressed Air Fittings



END STOP

PART NO.	OD
PM4615E	15
PM4622E	22



STEM ADAPTOR

PART NO.	OD
PM051214E	12 X 1/2"
PM051514E	15 X 1/2"
PM051516E	15 X 3/4"
PM051814E	18 X 1/2"
PM052214E	22 X 1/2"
PM052216E	22 X 3/4"



REDUCER

PART NO.	PIPE OD ENDS	TUBE OD BRANCH
PM061512E	15	12
PM061815E	18	15
PM062215E	22	15
PM062218E	22	18
PM062815E	28	15
PM062822E	28	22



PORTING BLOCK

PART NO.
JG-L-WSK 1/2" X 1/2" 5 CONNECTIONS

PEX Push-In Range

Luthra Pneumsys - JG Speedfit's unique multi-seal technology provides fast, simple and secure connections that dramatically reduce the installation time of plumbing and heating systems when compared to traditional methods. Our products are fitted and demounted without using tools and are suitable for hot and cold-water applications and central heating systems.



15 mm - 28 mm PEX Pipe and Push-In Fittings



PEX BARRIER PIPE

PART NO.	SIZE MM
15BPEX-20 X 3L	15 X 3
22BPEX-20 X 3L	22 X 3
28BPEX-10 X 3L	28 X 3



STRAIGHT CONNECTOR

PART NO.	SIZE MM
PEM0410W	10
PEM0415W	15
PEM0422W	22
PEM0428W	28



REDUCING STRAIGHT CONNECTOR

PART NO.	SIZE MM
PEM201510W	15 X 10
PEM202215W	22 X 15



EQUAL ELBOW

PART NO.	SIZE MM
PEM0310W	10
PEM0315W	15
PEM0322W	22
PEM0328W	28

15 mm - 28 mm PEX Pipe and Push-In Fittings



EQUAL TEE

PART NO.	SIZE MM
PEM0210W	10
PEM0215W	15
PEM0222W	22
PEM0228W	28



FEMALE COUPLER TAP CONNECTOR

PART NO.	SIZE MM
PSE3201W	15 X 1/2"
PSE3203W	15 X 3/4"
PSE3202W	22 X 3/4"



SUPERSEAL PIPE INSERT

PART NO.	SIZE MM
STS10	10
STS15	15
STS22	22
STS28	28

15 mm - 28 mm PEX Pipe and Push-In Fittings



PLUG

PART NO.	SIZE MM
PL10	10
PL15	15
PL22	22
PL28	28



BENT TAP CONNECTOR

PART NO.	SIZE MM
PEMBTC1514	5 X 12"



STEM ELBOW

PART NO.	SIZE MM
PEM2210W	10
PEM2215W	15
PEM2222W	22

15 mm - 28 mm PEX Pipe and Push-In Fittings



REDUCING TEE

PART NO.	SIZE MM
PEM3015BW	15X10X10
PEM3015AW	15X15X10
PEM3022CW	15X15X22
PEM3022BW	22X15X15
PEM3022DW	22X15X22
PEM30221AW	22X22X10
PEM3022AW	22X22X15
PEM3028BW	28X22X22
PEM3028AW	28X28X22
PEM3028DW	28X22X28



REDUCER

PART NO.	SIZE MM
PEM061510W	15 X 10
PEM062215W	22 X 15
PEM062815W	28 X 15
PEM062822W	28 X 22

15 mm - 28 mm PEX Pipe and Push-In Fittings



END STOP

PART NO.	SIZE MM
PSE4610W	10
PSE4615W	15
PSE4622W	22



PIPE CLIP

PART NO.	SIZE MM
PC15W	15
PC22W	22
PC28W	28



BRASS MALE ADAPTOR

PART NO.	SIZE MM
MW011504N	15 X 1/2"
MW012206N	22 X 3/4"
MW012808N	28 X 1"

List of Clients



Autoliv



adani



SANSEERA
ideas@work



Bisleri

Marshall



ArvinMeritor



ABB





Mercedes-Benz



vodafone



TOYOTA



MICROCHIP







Warning Installation By Self or Designated Workman At Site

The failure or improper selection or utilization of the products described herein or related item may potentially result in severe consequences, including but not limited to, loss of life, personal injury, and property damage. This document, in conjunction with additional informational resources originating from Luthra Pneumsys, its subsidiary entities, and duly authorized distributors, serves to present product and system options for further exploration, targeting individuals possessing requisite technical expertise.

It is incumbent upon the user, through a meticulous process of analysis and testing, to assume full responsibility for the ultimate selection of both the system and its constituent components. This responsibility extends to ensuring that all performance, durability, maintenance, safety, and warning

criteria pertinent to the given application are scrupulously adhered to. The user must comprehensively scrutinize all facets of the application, adhere to pertinent industry standards, and meticulously adhere to the guidance provided in the current product catalog, as well as any supplementary materials disseminated by Luthra Pneumsys or its subsidiary entities or duly authorized distributors.

To the extent that Luthra Pneumsys or its subsidiary entities or duly authorized distributors furnish component or system options predicated upon data or specifications provided by the user, it falls to the user to affirm that said data and specifications are not only suitable but also adequately robust for the entirety of contemplated applications and reasonably foreseeable uses encompassing the components or systems in question.

Contact Us

FACTORY

Plot no 31,32,33,34 Royal Industrial Hub Bhiwandi Kaman Road, Kaman
Thane District- 401208

HEAD OFFICE (MUMBAI)

803, 805 & 806, 72 Corp, Saki Vihar road, Saki Naka, Mumbai, Maharashtra,
PIN code - 400072

MUMBAI

C/O Luthra Hydro Pneumatic Industries Unit No-2, Luthra Industrial
premises Safed Pool, Andheri (E), Mumbai-400072

PUNE

Heuu Industrial Space, Shop No. 234, 2nd Floor, Plot no.C -19, DI Block,
MIDC, Behind Thermax, Chinchwad, Pune-411019

BENGALURU

1108/L, 1st Fl, 9th 'C' main, Behind Hampinagar Bus Stand, R.P.C Layout,
Vijay Nagar Bengaluru - 560040

DELHI

G-3, Pkt- 7, Plot No -6, Sec-12, Vardhman Plaza, Near Dwarka Sec-12
Metro Station, New Delhi-110075

KOLKATA

Bindubashini Market Complex, being No. A/1, Ground Floor, Tegharia
Main Road, P.O. Hatiara, P.S. Baguiati, Kolkata – 700 157, Dist. North 24
Parganas

CHENNAI

Luthra Pneumsys Advance Energy Solutions
Modular Aluminum Piping No-3, G1 Ground Floor, Jasmine Court,
Manickam Pillai Nagar, Lakshmpuram road, Poonamallee, Chennai - 641037

COIMBATORE

Old No. 8A, Parameswaran Pillai Layout, Pavanaickenpalayam, Coimbatore,
Tamil Nadu 641037



Plot no 31,32,33,34 Royal Industrial Hub Bhiwandi
Kaman Road, Kaman Thane District- 401208

☎ +91 8655427657 ✉ marketing@luthrapneumsys.com

MUMBAI | BENGALURU | CHENNAI | COIMBATORE | DELHI | KOLKATA | PUNE | UAE